

IE Toolbar Studio 2.16

© Softomate LLC. All rights reserved.

Reproduction of this guide in whole or in part by any means whatsoever is prohibited without the prior written consent of the author and publisher.

Softomate LLC.
104 6th Street, Unit B
Lynden, Washington 98264, USA
www.softomate.com

Contents

INTRODUCTION	4
Step-by-step guide to making the toolbar downloadable and installable	4
FEATURES	5
Branding:	5
Unlimited buttons, images and menus:.....	5
Only 180KB size:	5
Search box:.....	5
Combined search:	6
Catcher for Internet Explorer address bar and DNS error:.....	6
Catch searches on different search engines:.....	6
Popup killer:.....	6
Dynamic menu contents and buttons:.....	6
Support for International characters:.....	6
Multiple configurations:.....	7
Toolbar scripting:	7
New! Toolbar changing dynamically for the pages on your website:.....	7
Menus and submenus:.....	7
Hot icons / rollover effect:.....	7
Keyword highlighting:	7
Word Find Feature:.....	7
News ticker integration:	7
Mini Web page:.....	8
Zoom in/Zoom out feature:.....	8
User customization:	8
Launch external applications:.....	8
Context search:	8
Edit and password boxes:.....	8
Checkboxes and radio buttons:	8
Automatic Installation:.....	9
Upgrade feature:	9
Automatic Upgrade:.....	9
Uninstall feature:	9
New! Affiliate capabilities:	9
Clear Search History:	9
Clear cookies / clear history	9
New! Privacy tools: Clear PC activity histories.....	9
New! Custom USER_AGENT string (optional).....	9
New! Bandwidth saving capability (turn Flash/Image display On/Off):.....	10
New! POP-up blocker whitelist functionality:.....	10
About box:	10
Dynamic configuration files:.....	10
Distribute additional files with your toolbar:	10
Additional visual elements for your toolbar:.....	10
External toolbar interface:	10
Do not limit your creativity!.....	11
New! Enhanced security.....	11
No limits at all!.....	11
SHOWCASE.....	12
You can have your toolbar to be functioning like the Google toolbar	12

You can build your toolbar with features similar to the Dogpile toolbar	12
You have an auctions site? Design your toolbar like eBay	12
Why the Toolbar is called Dynamic?	12
MANUAL	13
<TOOLBAR> tag	14
<BUTTON> tag	14
<MENU> tag	16
<ITEM> tag	17
<ITEM> tag and submenu items	18
<SEPARATOR> tag	18
<COMBO> tag	18
<COMBO> tag for select-type combo boxes (non-editable)	19
<TEXT> tag	20
<EDIT> tag	20
<PASSWORD> tag	21
<CHECKBOX> tag	21
<BANNER> tag	22
<BUBBLE> tag	22
<SPACE> tag	23
<INCLUDE_XML> tag	23
<INCLUDE_CUSTOM_XML> tag	24
Using multiple configurations for your toolbar	25
Macro substitutions	25
Accessing toolbar properties via Javascript	26
Using national non-latin symbols in the toolbar	27
Using context search	27
Enabling the word-find feature	28
<EXTERNAL_SEARCH> tag to catch search queries	28
Performing redirections and pop-ups while the user surfs the net	28
<DNSCATCH> tag to catch DNS and Error 404	29
<AUTOSEARCH> tag to capture address bar searches	30
<HOMEPAGE>	30
<COMMANDS> tag	30
<LOCALHTML> command	31
<WEBJUMP> command	32
<CHANGELAYOUT> command	33
<SWITCHCOMMAND> command	33
<CLEARCOUNT> command	34
<ENABLEIMAGE> command	34
<ENABLEFLASH> command	34
<HIGHLIGHT> command	34
<BLOCKPOPUPS> command and usage of the popup-blocker feature	35
<ALLOWPOPUPS> command to allow pop-ups from certain sites (whitelist functionality)	35
<COMMANDCHUNK> command to execute several commands at once	36
<SHELLEXECUTE> command	36
<SETTINGS> section	37
Setting background image And colors for the toolbar	41
Setting the "skin" for the browser	42
Manual toolbar update	42
Automatic toolbar update	42
Disabling automatic updates	43
Options page	43
Options supported on the 'user options' page and using Custom XML functionality	43
Toolbar scripting – browsing automation and extension via toolbar	44
Using affiliate capabilities	45
FAQ – FREQUENTLY ASKED QUESTIONS	46
How can I use my own images for buttons?	46
Can we have different languages for toolbar button text and menu text?	46
Is it possible to change toolbar language 'on the fly' without restarting the IE?	46
How can I organize news or advertising via the toolbar?	46
How can I refresh the mini web page in the banner periodically?	46
How can I have news, short jokes or ads scroll across the toolbar?	47
Is there a way to have the toolbar send the 'OnDocumentComplete' request to our server only if the user is viewing a URL that starts with http://	48
How can I implement pagerank or URL information in the toolbar?	48
Does the toolbar allow users to customize their own toolbar?	48
How can I provide more toolbar customization for users except of options.html properties?	48

How will the INCLUDE_XML feature behave when users go offline?49

How do I release a new version of the toolbar to my clients?.....49

How do I know if the update feature is working?49

Does it do update automatically or will it prompt me?.....49

How does it know in general to update?.....49

Why do we need to sign this cab file?.....50

How can I make a digital sign for the toolbar?50

How can I obtain a certificate to sign the toolbar with?.....50

How can I sign the toolbar with the Softomate's certificate?51

Do I need to sign the .cab file that is used for updates?.....51

Is it possible to change the default install directory in the .exe installer?.....51

Is there any ways to add or edit something in the installer? I want to add "Terms of use" of the toolbar, and let users choose to "Accept" or "Do not Accept" before they continue installation.....51

 When reinstalling the toolbar it shows the error message: "could not extract the current file. The process cannot access the file because it is being used by another process.".....52

What type of commands can I use with the "Shell command on the User PC"?52

How can I include a .DLL into my toolbar's .CAB and make this .DLL registered when installing my toolbar?52

 How can I include an .EXE into my toolbar's .CAB and make this .EXE file to be executed when someone presses a button or clicks menu item in my toolbar?.....52

Could you create a new GUID or CLSID for us? We do not want it to conflict with others.52

Do you use MFC or WTL for the toolbar? Will it require additional DLL's or downloads?.....52

Opening a page in a new or modal browser window52

 When clicking a link in an html-bubble, is it possible that the redirect is opened in the bubble itself instead of the main browser window?.....53

Can I set up toolbar to rotate multiple banner HTMLs in the same space on toolbar?.....53

Sending POST requests via the toolbar53

 I'm trying to edit the basis.xml file to contain a listbox. Clicking on each list item needs to redirect to a different site.53

How to use multiple search sites in the toolbar.....53

Disabling the down arrow shown beside buttons54

Providing news/information54

Changing the icon used for "word-find" toolbar buttons54

How can I reset pop-up blocker counter?54

Is there an easy way to the pop-up blocker to work exactly as pop-up blocker in Google toolbar?.....54

How can I toggle display of images in the browser?55

How can I enable/disable flash animations in the browser?.....55

How can I indicate pop-up blocking by changing the button icon?55

How can I make some buttons or menu items disabled by default?55

How can I view the source code of the currently visited page by clicking one button?.....55

I have some problem: when I try to run toolbar_builder.bat an error occurs.....56

Does your toolbar support https? Does it support server side PUSH operations?.....56

 What will happen if I set two or more buttons with the same id? Will this mean that the checkbox for this id will be controlling the button with the same id?56

Does the toolbar include any types of spyware?56

What will be the cost of the extra feature set implementation?.....56

APPENDIX..... 57

 Example basis.xml for a Google-like toolbar.....57

 Example basis.xml for an eBay-like toolbar59

 Example basis.xml for a Dogpile-like toolbar.....62

 Example basis.xml for a pure HTML toolbar64

 XMLs for the Advanced Toolbar sample66

 Standard Code Pages.....69

Introduction

With the Toolbar Studio you can build dynamic IE toolbars in matter of minutes. No programming knowledge is required. You can get a fully functional toolbar application to publish on your site right by following the instructions. After building a toolbar you'll have a setup.exe file and web installation package as .cab file. All you need to start building your toolbars is to obtain the Toolbar Studio package that you can order at www.besttoolbars.net.

The basic steps for creating your own toolbar are:

1. After you run the Toolbar Studio, it will ask if you want to start a Wizard, open an existing toolbar package, or start from scratch.
2. Choose the Wizard option in the beginning. It will let you to create your Toolbar in a most simple and straightforward manner.
3. You also could be interested to look at the sample toolbars we provide. You can start by modifying them instead on beginning from scratch.
4. Toolbar Studio has simple and logical interface and have context help always visible in the bottom-right corner.
5. If you need all the power of the dynamic IE Toolbar and access to all the advanced features we have, you can edit the .XML configuration manually by choosing "Edit Raw XML" from the Tools menu. The XML specifications are described in the following sections of this manual.
6. Once you are ready to publish your created toolbar on the web, you can create .exe installer or web ActiveX installer for your toolbar. These two options are available in the Tools menu of the Toolbar Studio.
7. As a result you will get a single .exe installer file (which you can upload to your website or distribute on CD) or a webinstall folder with several files (which you need to upload to your website and provide a link to install.html page).
8. When you are ready to release a new version to the users, you should increase the version number in the Settings dialog of the Tools menu and upload new .cab file and new version.txt file to your site.

Should you have any specific questions we are ready to help you.

Call our tech support 24x7 at: 866 862 1289

Or email us: support@besttoolbars.net

Step-by-step guide to making the toolbar downloadable and installable

First, you have to decide from which folder of your website you'll distribute the toolbar. Let's say that it will be <http://www.mysite.com/toolbar/>.

As a minimum it should contain the following files:

- A .cab file – it is the toolbar itself. The exact file name usually reflects name of the toolbar itself.
- install.html – a webpage that invites users to install the toolbar. It can have any formatting and decoration. It shall reference the .cab file in the following manner:

```
<object classid="clsid:92F02779-6D88-4958-8AD3-83C12D86ADC7" codebase="toolbar.cab" id="toolbar" height="0" width="0">
</object>
```

- version.txt – it contains version number of the Toolbar. It is verified by the toolbar when it performs an update. You should increase the version number each time you are releasing a new edition of the toolbar, otherwise already installed toolbars

104 6th Street, Unit B
Lynden, Washington 98264
www.besttoolbars.net
16:11 03/01/2005

Sales: +1 877 243 8735
Fax: +1 801 457 8820
Tech: +1 866 862 1289
Page 4

wouldn't know that they should update themselves.

The <SETTINGS> section of the toolbar XML file shall have pointers to this folder and to the .cab file:

```
<URL id="serverpath" default="http://www.mysite.com/toolbar/" />
<URL id="updateUrl" default="http://www.mysite.com/toolbar/toolbar.cab" />
```

When install is successfully finished the user will be taken to URL specified in the next line:

```
<URL id="firstURL" default="http://www.mysite.com/toolbar/InstallSuccess.html" />
```

This URL will be displayed after the toolbar update:

```
<URL id="urlAfterUpdate" default="http://www.mysite.com/toolbar/UpdateSuccess.html" />
```

If the toolbar will be uninstalled, this URL will be displayed:

```
<URL id="urlAfterUninstall" default="http://www.mysite.com/toolbar/UninstallComplete.html" />
```

You can define an error message that appears when the update process fails for some reason (e.g a network connection failure) in the same <SETTINGS> section of the XML.

```
<MESSAGE id="UpdateError" default="Unable to update toolbar" />
```

Please note that Install.html page has to be located in a folder with .CAB file (<http://www.mysite.com/toolbar/> in our example) the other pages could be located anywhere else.

This is enough for installing the toolbar and updating existing toolbar installations.

Features

You can build fully branded dynamic IE toolbar with your own links and unique functionality. The Toolbar Studio makes the process of creating your unique toolbar fun and easy. The toolbar that you build can have the following features:

Branding:

You can have the toolbar branded with your own logo. You can use your corporate colors for background and text. Add a background image "skin" with your image to the client browser. Build a fully branded IE toolbar to be placed on the screen of your customers!

Read More: Page 42 : Setting the "skin" for the browser

Unlimited buttons, images and menus:

You can have unlimited number of buttons on your toolbar. Each button can have a menu that pop-up when the button is clicked. Alternatively clicking on a button can take the users to a predefined page located somewhere on the Web. Each location can be opened in a new web browser window.

Read More: Page 14 : <BUTTON> tag

Only 180KB size:

Unlike other toolbars our toolbar is only 180KB. It can be installed easily by your customers even with low-speed internet connection.

Search box:

That allows your customers to perform a search from your Toolbar. The users can enter either a question or keyword(s) and hit the "Enter" key on the keyboard, or click the "Search" button to search on your site or to search using search engine of your choice

(multiple search options are possible). Users can view a history of their recent searches by clicking the down arrow on the right edge of the search box. Your users can also perform searches by selecting a desired text on any web page and then dragging and dropping that text into the search box on the Toolbar. Once the text is "dropped" into the search box, search will be automatically performed for that text (no need to click the "Search" button).

Read More: Page 18 : <COMBO> tag

Combined search:

The Combined Search is a great way to save place on your Toolbar while still retaining access to all the different ways to search. Simply enter search terms in the search box and click on the main part of the button to search, or click the little triangle on the right-hand end of the button to bring down a menu of different search types. Pick one of the items from the list and it will become default. Combined Search - Combines many search options into one.

Read More: Page 33 : <SWITCHCOMMAND> command

Catcher for Internet Explorer address bar and DNS error:

With our toolbar Studio you can use the advantages of built-in address bar and DNS catcher. You can configure that if the user of the toolbar mistypes an URL he will be redirected to YOUR page instead of standard explorer DNS error and Error 404 pages. You can also configure the toolbar so that whenever the user enters a word into Explorer address bar he gets redirected to your page.

Read More: Page 29 : <DNSCATCH> tag to catch DNS and Error 404

Catch searches on different search engines:

You can catch the searches that the user does on different search engines so that the keywords he was searching for example on Google or Yahoo will automatically be substituted into the search box of your toolbar. It will take a single click to search using your toolbar for the same keywords.

Read More: Page 28 : <EXTERNAL_SEARCH> tag to catch search queries

Popup killer:

Destroys unwanted pop-up and pop-under ads. Add this feature to your toolbar and your users will never see annoying pop-ups while surfing the web with your toolbar installed. One more advantage for your toolbar users! Popup killer can be configured to count the number of blocked popups and play a sound/change the cursor shape when popup window is blocked.

Read More: Page 35 : <BLOCKPOPUPS> command and usage of the popup-blocker feature

Dynamic menu contents and buttons:

Toolbar menus and submenus can be created from the output of server side scripts (such as PHP, Perl CGI or ASP). This can be "Top 10 items", "hot list", "more search results" and so on. You can specify what buttons the toolbar will have and what menu contents to show basing on current URL opened in the browser or unique TOOLBAR ID. TOOLBAR ID can be used to give personal appearance and features to your toolbar customers. You can also have different features set like the one for logged in users and another for those who are not logged in. The TOOLBAR ID stays the same after toolbar is updated and even if the toolbar was removed and installed again later.

Read More: Page 23 : <INCLUDE_XML> tag

Support for International characters:

Our toolbar supports International characters (UNICODE). German, Spanish, Japanese, Arabic or Chinese – you can easily customize it for any language.

Read More: Page 27 : Using national non-latin symbols in the toolbar

Multiple configurations:

Several configuration files can be used for the toolbar. This allows you to create several different appearances for your users or have several versions of toolbar in different languages.

Read More: Page 25 : Using multiple configurations for your toolbar

Toolbar scripting:

It opens a window into a world of new opportunities. In our recent version you can script the toolbar or a page that is currently being viewed by your toolbar customer with JavaScript. This way you can implement keyword matching, content analysis or ranking mechanisms into your toolbar. Your customers will be amazed by new features that you can make available to them.

Read More: Page 44 :

Toolbar scripting – browsing automation and extension via toolbar

New! Toolbar changing dynamically for the pages on your website:

You can use JavaScript on pages of your website to change parts of the toolbar on the fly as a user navigates across the pages on your site.

Read More: Page 24 : <INCLUDE_CUSTOM_XML> tag

Menus and submenus:

Users can access important sections of your Web site quickly and simply by using a drop-down menu on the toolbar. Because you provide users quick links to the most relevant sections of your Web site right from the start, you save them time. Each link can be opened in a new web browser window. You can have unlimited menu items and submenu's in IE toolbar.

Read More: Page 16 : <MENU> tag

Hot icons / rollover effect:

Make your toolbar interactive by adding animated icons and images.

Read More: Page 14 : <BUTTON> tag

Keyword highlighting:

The highlight feature allows your users to locate their search terms on the search results page(s). Clicking the "Highlight" button will highlight all their search terms in different colors on the search results page. The highlight feature is a toggle switch that may be turned on or off simply by clicking on it.

Read More: Page 34 : <HIGHLIGHT> command

Word Find Feature:

It allows your customers to locate the search terms on the page and quickly navigate among them in the text of a page. When you enter your search terms into the search box, extra buttons containing these terms will appear on the right edge of the Toolbar. By clicking on these buttons your customers will jump to the next occurrence of that word on the page. Each word has its own button.

Read More: Page 28 : Enabling the word-find feature

News ticker integration:

If you want to keep your users informed and achieve higher interaction level you can put a scrolling news ticker or flashing news notifications on the toolbar. You can implement server side scripts to feed news to customers of your toolbar.

Read More: Page 46 : [How can I organize news or advertising via the toolbar?](#)

Mini Web page:

You can put a mini webpage on your toolbar. This opens the door to unlimited toolbar content. This way you can put notifications, banners, animations and sounds into your toolbar. You can put this page directly on a toolbar (BANNER feature) or as a minipage that opens up when the user clicks a button in a toolbar (BUBBLE feature).

Read More: Page 22 : [<BANNER> tag](#)

Zoom in/Zoom out feature:

By making this feature a part of the toolbar your users will be able to adjust the size of the pages they are browsing using the buttons on the toolbar.

Read More: Page 30 : [<COMMANDS> tag](#)

User customization:

Allows your users to customize the toolbar in a number of ways:

- Define what buttons they wish to have on the toolbar

- Open a new window to display results each time you search

- Auto Complete

- Keep a search history in a drop-down list under the search box

- Automatically run a search when you make a selection from the search history

- Run Search Drag Automatically

- Update toolbar automatically

Also your users can set their own preferences like: whether they want text labels for the buttons or icons only. Choose width of the text box. Choose colors for the menu, and a font to use in toolbar menus.

Read More: Page 43 : [Options supported on the 'user options' page](#)

Launch external applications:

It is possible to run external application as a result of clicking a button or menu item in the toolbar. You can run system commands, open Notepad to edit a file or you can launch .EXE applications that you distribute with the toolbar. You can pass the keywords into command line.

Read More: Page 36 : [<SHELLEXECUTE> command](#)

Context search:

With the context search feature users can quickly conduct a search on a word or phrase within any Web page by highlighting it and right clicking their mouse and then selecting appropriate "Search" from the pop-up menu.

Read More: Page 27 : [Using context search](#)

Edit and password boxes:

You can put edit boxes on your toolbar you can also put password box on your toolbar that hides typed symbols with an * (asterisk symbol).

Read More: Page 20 : [<EDIT> tag](#)

Checkboxes and radio buttons:

You can add checkboxes and radio buttons on your toolbar if you want to enable your users to toggle some options.

Read More: Page 21 : [<CHECKBOX> tag](#)

Automatic Installation:

It's simple for your users. Once downloaded the toolbar gets installed automatically and integrated into user's browser.

Read More: Page 49 : How do I release a new version of the toolbar to my clients?

Upgrade feature:

For your user's convenience, Toolbar is upgradeable. This means that your users will be able to download and install a new version of the Toolbar when additional features or functionality are made available. You can link this feature to any menu item or button in your toolbar. After successful upgrade of the toolbar the user will be redirected to a page that can be defined in configuration file.

Read More: Page 42 : Manual toolbar update

Automatic Upgrade:

Toolbar can check automatically for the upgrades. This check can be performed either when the browser starts or periodically. If newer version is available from your website the toolbar will offer your users to download and install this version.

Read More: Page 42 : Automatic toolbar update

Uninstall feature:

This feature allows your users to uninstall the toolbar. You can associate this feature to any menu item or button in your toolbar. After uninstalling the user will be redirected to a special page that can be defined in configuration file.

Read More: Page 30 : <COMMANDS> tag

New! Affiliate capabilities:

There is a special feature which will help you to support affiliates. When you make a version of the toolbar to be distributed by an affiliate, you put there a file named `affid.dat` with a special assigned ID. When user installs the toolbar from your affiliate, contents of the `affid.dat` file are stored inside `AffiliateID` variable that you can use in macro substitutions to support affiliate programs reaching more users through affiliates.

Read More: Page 45 : Using affiliate capabilities

Clear Search History:

The Toolbar remembers recent search queries. The search history can be accessed by clicking on a down arrow on the right edge of the search box. The Clear Search History option allows your users to clear the history of the search box.

Read More: Page 30 : <COMMANDS> tag

Clear cookies / clear history

The Toolbar can clear cookies and cache of the browser thus allowing your users to maintain their privacy. You can associate this feature to any menu item or button in your toolbar.

Read More: Page 30 : <COMMANDS> tag

New! Privacy tools: Clear PC activity histories

Securely clears your PC activity histories. Ensures that your use of PC in private without having to worry about others seeing what you have been doing, or reading your sensitive data. Delete browser history, including the IE AutoComplete entries! Clear internet cookies, Delete Internet Temp Files, clear Windows Temp Files, clear Windows history of recently opened documents and files on your computer (Documents menu), clear Windows Recycling Bin and clear Windows Clipboard.

Read More: Page 30 : <COMMANDS> tag

New! Custom USER_AGENT string (optional).

104 6th Street, Unit B
Lynden, Washington 98264
www.besttoolbars.net
16:11 03/01/2005

Sales: +1 877 243 8735
Fax: +1 801 457 8820
Tech: +1 866 862 1289
Page 9

You can add a custom string to USER_AGENT variable that is being passed by the browser to the server and appears in WEB logs. This way you can easily track who is using your toolbar by parsing the weblogs of your site.

Read More: Page 37 : <SETTINGS> section

New! Bandwidth saving capability (turn Flash/Image display On/Off):

This ability enables users to quickly toggle on/off loading of flash animations and images on the web pages.

Read More: Page 30 : <COMMANDS> tag

New! POP-up blocker whitelist functionality:

Add sites to pop-up blocker whitelist so that the pop-ups from them will never be blocked. The sites can be added to the whitelist by default. The customers can also add sites to the whitelist if the pop-ups generated by the site are known to be informative.

Read More: Page 35 : <ALLOWPOPUPS> command to allow pop-ups from certain sites (whitelist functionality)

About box:

Once the user selects "about" item in the menu the popup window will show the latest Toolbar version information and your company details.

Read More: Page 31 : <LOCALHTML> command

Dynamic configuration files:

You can put the configuration .XML file within toolbar distributive, but also you can put it on your web sever achieving truly dynamic toolbar behavior. By altering a single XML file on your web server, you can completely change the look and operation of the toolbar without the need for your customers to upgrade the toolbar.

Read More: Page 23 : <INCLUDE_XML> tag

Distribute additional files with your toolbar:

You can distribute static HTML pages, Music, Flash and even executable programs (.EXE) with your toolbar. Integrate your .EXE with the toolbar and provide unique functionality to toolbar users.

Read More: Page 49 : How do I release a new version of the toolbar to my clients?

Additional visual elements for your toolbar:

With the Toolbar Studio you can add select-style combo boxes to your toolbar, add static texts and buttons with custom graphics. Menu elements can have custom styles including the color for menu background, color for menu texts you can also specify colors used for highlighting of menu items. In case the toolbar do not fit fully on the desktop your customer will still be able to access the functionality of buttons and menu items (clicking on a double arrow button and selecting the appropriate element from the pop-up menu).

Read More: Page 41 : Setting background image And colors for the toolbar

External toolbar interface:

Toolbar has external program interface. You can access toolbar properties (to read or write) via JavaScript. You also can pass this information to the server forming a special response when user clicks a button or menu item in the toolbar. Properties available from JavaScript include current version of the toolbar, Unique Toolbar ID, User ID that you can set/read, user name and user password. Using this you can implement authentication through the toolbar, provide exclusive content for toolbar users and similar. Current URL that the user browses and current domain are also accessible.

Read More: Page 26 : Accessing toolbar properties via Javascript

Do not limit your creativity!

Need SMS, quotes, currency converter or translation feature in your toolbar? Make sure to check the developers corner on our website. We have a scripts that will allow you to have all the above. Unsure how to achieve something? Please contact us at support@besttoolbars.net.

New! Enhanced security

While the Toolbar has all the features to extend it's functionality and even can be scripted using HTML/Javascript the security is not affected. Only specific pages that were granted necessary access can modify the toolbar properties and options.

Read More: Page 37 : <SETTINGS> section

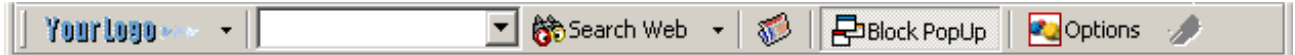
No limits at all!

Unsure if the feature you are looking for is supported? Please ask our sales@besttoolbars.net possible we have a trick to achieve what you ask. You can ask us to support the new feature and we will make this feature a part of our next toolbar version that you'll get for FREE. What if you need very specific feature? Please ask our development department to implement it for you. Basing on your specifications we will provide free estimation for the development. Our rate for custom software development is \$20 USD per hour.

Showcase

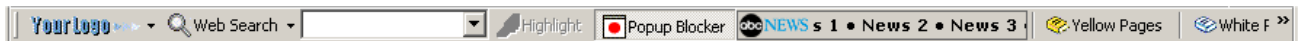
With Toolbar Studio you can create professionally looking toolbars. For example you can make the visual layout of your toolbar looking as professionally as Google, Yahoo and eBay toolbars.

You can have your toolbar to be functioning like the Google toolbar



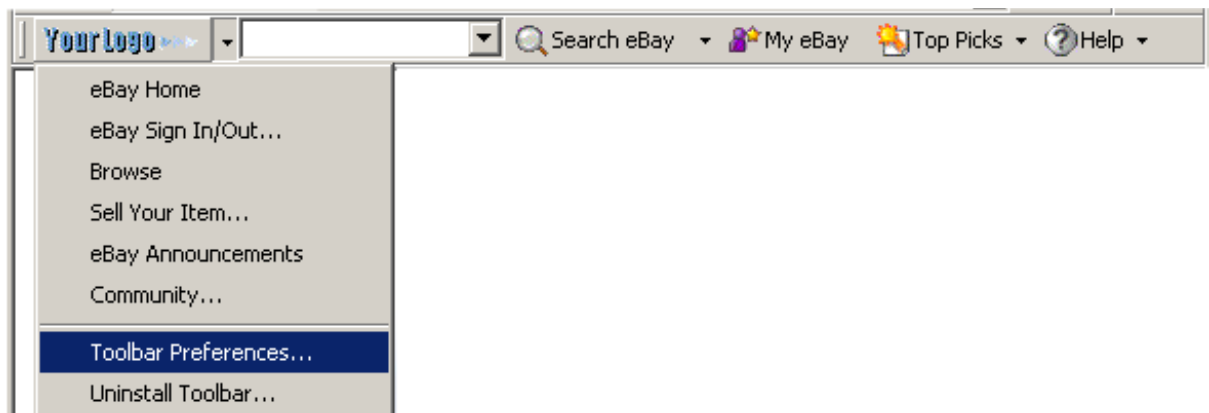
(see the [xml file](#) for this toolbar)

You can build your toolbar with features similar to the Dogpile toolbar



(see the [xml file](#) for this toolbar)

You have an auctions site? Design your toolbar like eBay



(see the [xml file](#) for this toolbar)

Why the Toolbar is called Dynamic?

The majority of toolbar construction kits allow you to build the Static toolbar. Meaning that if you need to update it you would have to create a completely new toolbar, and get your users to upgrade their current version. Dynamic toolbar instead can include its configuration files from an HTTP server. So whenever you change the server file all your customer toolbars can get updated instantly. You can define that the whole toolbar will be dynamic or you can make that a certain portion of the toolbar will be dynamic.

There are 2 modes to synchronize the toolbar with the server:

- 1) Periodically (you define the periodicity in minutes)
- 2) Toolbar refreshes itself while the user navigates from page to page.
- 3) On the browser start.

To specify that the toolbar needs to be refreshed periodically at the specified periods of time "expire" attribute of INLCUDE_XML tag is used. This attribute defines refresh interval in minutes. The following example will refresh an XML file news.xml from the server yourtoolbar.com every ten minutes:

Example:

```
<INCLUDE_XML filename="http://yourtoolbar.com/news.xml?id=%toolbar_id&user=%user_id"
expire="10"/>
```

Note: there are several substitutable variables in the URL. Substitutable variable names are denoted by the leading percent sign. They will be substituted with actual values when the URL is going to be sent to the server. Please read the manual about substitutable variable names you can use.

Note: If the connection with your server can not be established the locally cached version of the .XML file will be used till the connection is reestablished. Please read about this in documentation for INCLUDE_XML tag.

To specify that the toolbar needs to be refreshed while the users surfs the web `sync` attribute of INCLUDE_XML tag is used. `sync` attribute can be set to `BeforeNavigate` or to `onDocumentComplete` toolbar both tell the toolbar to refresh it's configuration each time new document is open in the browser. The difference between `BeforeNavigate` and `onDocumentComplete` is following: the first is triggered before the page is downloaded while the other is triggered after the page has been downloaded completely.

Example:

```
<INCLUDE_XML filename="http://yourtoolbar.com/news.xml?id=%toolbar_id&user=%user_id"
sync="BeforeNavigate"/>
```

To specify that the toolbar needs to be refreshed only when the browser starts please set the `expire="0"` attribute (or omit it).

Manual

The toolbar configuration is stored inside .XML files. Normally, you do not edit these files directly. Since Toolbar Studio gives you a full set of options to build your custom toolbar. However, some advanced features require you to change the XML manually. To start editing XML, please choose "Edit Raw XML" from the Tools menu of the ToolbarStudio.

This option will open an editor with the main basis.xml file loaded into. This file is always distributed with the toolbar package. Please note that additional .xml files can be referenced from the basis.xml (via INCLUDE_XML) so that the toolbar configuration is combined from several files. The referenced files can be located on the server to achieve Dynamic Toolbar behavior (Please look over the documentation for <INCLUDE_XML> tag).

The configuration file format is presented below. Please note that it always has to begin with <TOOLBAR> and end with </TOOLBAR> plus it is required that the toolbar configuration contains COMMANDS and SETTINGS sections enclosed between <TOOLBAR> </TOOLBAR> tags.

The simple format for the basis.xml:

```
<?xml version="1.0"?>
<TOOLBAR name="IE Toolbar Sample" icons="icons.bmp" hot_icons="icons.bmp" dllname="toolbar">

    <!--Toolbar definition goes here. -->

    <COMMANDS>
        <!--Toolbar commands goes here. -->
    </COMMANDS>

    <SETTINGS scope="1">
        <!--Toolbar settings goes here. -->
        <URL id="firstURL">
```

```
default="http://www.yourtoolbar.com/toolbar/toolbar.asp#how?toolbar\_id=%toolbar\_id">  
    </SETTINGS>  
</TOOLBAR>
```

To make the toolbar fully dynamic you need to put your configuration file on the server and reference it from the basis.xml like below:

```
<?xml version="1.0"?>  
<TOOLBAR name="IE Toolbar Sample" icons="icons.bmp" hot_icons="icons.bmp" dllname="toolbar">  
    <INCLUDE_XML filename="http://www.yourtoolbar.com/toolbar/toolbar.xml" />  
    <COMMANDS>  
        <!--Toolbar commands goes here. -->  
    </COMMANDS>  
    <SETTINGS scope="1">  
        <!--Toolbar settings goes here. -->  
        <URL id="firstURL"  
default="http://www.yourtoolbar.com/toolbar/toolbar.asp#how?toolbar\_id=%toolbar\_id" />  
    </SETTINGS>  
</TOOLBAR>
```

In the above example the toolbar configuration is obtained from the server file <http://www.yourserver.com/toolbar/toolbar.xml> each time user opens his browser.

*Note: to minimize the traffic generated by the toolbars requesting <http://www.yourserver.com/toolbar/toolbar.xml> expire attribute could be used. This will tell the toolbars to update as frequently as specified by expire attribute. For example setting expire="1440" tells that the toolbar will try to update itself once a day from the server (24*60=1440 minutes).*

<TOOLBAR> tag

TOOLBAR tag has the following format:

```
<TOOLBAR name="IE Toolbar Sample" icons="icons.bmp" hot_icons="icons.bmp"  
dllname="toolbar" layout="0">
```

Attributes of the <TOOLBAR> tag:

- name – the name of the toolbar displayed in the view->toolbars of the IE menu. It also displays as an item in the Start->Control Panel->Software
- icons – Bitmap file containing icons for the toolbar. This file is a Windows bitmap file that has to be like the following:



toolbar supports 16 x 16 pixels icons

- hot_icons – Bitmap file containing hot icons for toolbar (used for rollover effect)
- dllname – name of the DLL file with the toolbar. (usually toolbar.dll)
- layout – if you are using several layouts you can specify the default layout here
- height – the optional attribute to change toolbar height (default is 22 pixels)

See also: SETTINGS section, COMMANDS section, INCLUDE_XML tag

<BUTTON> tag

To add a new button into toolbar put the following command into the configuration file:

```
<BUTTON id="tb_button_1" caption="Home" img="5" hint="Navigate to homepage"
```

`href="http://www.yoursite.com/" command="redirect"/>`

In the fragment above caption defines the text that will be shown near the button. `img` attribute contains the index of the image in `icons.bmp` file.



`img="5"` setting will reference the 5th 16 x 16 image in `icons.bmp` file (the one with an envelope in the above example).

Note: The pixel in the upper left corner of the image is considered to be transparency color. All other pixels with the same color are displayed as transparent.

`Id` attribute contains identifier for the button. This identifier can be used to control visibility of that button from toolbar options page. Identifier has to be unique across all toolbar elements.

The `hint` setting allows you to specify 'tooltip' text to show when the user rolls the mouse over the button (this is useful to provide some more details about the functionality of the button).

Optional `image=` attribute create a button with custom image (your logo for example). The image must be in a `bmp` format. The image can have a rollover effect if you specify optional `hot_image=` attribute pointing to an image that is displayed when a mouse pointer moves over the button. Image and hot image for the button must have the same width.

```
<BUTTON id="logobtn" caption="MyCompany" image="logo.bmp" hot_image="logo_h.bmp"/>
```

Note: The pixel in the upper left corner of the image is considered to be transparency color. All other pixels with the same color are displayed as transparent.

The `href` attribute is the URL of the page to which the user will be redirected to when they click on the button (this attribute is used only when the `command` attribute is set to "redirect"). You can use macro substitutions inside the URL like `%url`— will be replaced with the current URL the user is visiting, `%toolbar_id` – will get replaced with unique toolbar identifier. See the Macro substitution section of this manual for further details.

The `command` attribute defines the action performed when the button is clicked. "redirect" means that clicking on a button will redirect the user to a webpage specified in `href=` attribute. The `command` attribute can reference any command defined in `<COMMANDS>` section and usually can have the following values:

- `command="Uninstall"` – Uninstalls the toolbar.
- `command="Update"` – Updates the toolbar.
- `command="Reload"` – Reloads the toolbar .XML file(s) refreshing the toolbar.
- `command="HideToolbar"` – Hides the toolbar
- `command="Highlight"` – Toggles Highlighting of the words in a search page on/off.
- `command="ZoomIn"` and `command="ZoomOut"` – Zooms the current HTML page.
- `command="ResetZoom"` - Reset zoom to normal (100%)
- `command="ClearCookies"` – Clears cookies in the browser.
- `command="ClearCache"` – Clears browser cache.
- `command="ClearHistory"` – Clears the list of recent searches in toolbar Search box.
- `command="BlockPopups"` – Toggles Pop-up blocker on/off.
- `command="AllowPopups"` – Adds currently visited website to the pop-up whitelist.
- `command="ClearCount"` – Clears count of blocked pop-ups.

- `command="EnableFlash"` – Toggles on/off loading of flash animations.
- `command="EnableImage"` – Toggles on/off loading of images in the browser.
- `command="ClearRecycleBin"` – Clears the Recycle Bin.
- `command="ClearTemp"` – Clears system temporary folder.
- `command="RemoveRecent"` – Clears list of the Recent Documents in the Start menu.
- `command="ClearClipboard"` – Clears the clipboard.
- `command="ClearAddressbar"` – Clear URLs entered into the address bar.
- `command="ClearAutoFill"` – Clears browser Autofill information for HTML forms and all passwords.
- `command="ClearIEHistory"` – Clears browser history.

By defining additional commands (<CHANGELAYOUT>, <SWITCHCOMMAND> e.t.c.) in <COMMANDS> section more sophisticated behavior can be added to the toolbar. For example you can define:

```
<WEBJUMP name="search1" href="http://www.google.com/search?q=%combol&hl=en"/>
```

And reference it from the button as:

```
<BUTTON id="tb_button_search" caption="GO" img="1" hint="" command="search1"/>
```

so that when you click that button search will be performed on Google.com using the keywords from combo1 combobox.

The toggle-type button (like popup blocker button) can also have an attribute `captionp` and `imgp` that defines the caption and icon for the button in pushed state. The format for <BUTTON> in that case is following:

```
<BUTTON id="some_id" caption="Blocker disabled" captionp="#cnt# blocked" img="4" imgp="5" command="blockPopups" />
```

By setting the `visibility="0"` attribute, you can make the button not to appear by default. It can be enabled by from the options page.

See also: controlling the elements visibility, Options page, Button with an image, defining button images as transparent, <COMMANDS> section

<MENU> tag



You can make a menu appearing when the button is clicked. If you have the following button in your toolbar:

```
<BUTTON id="some_id" caption="The caption you need" img="5" hint="hint" command="redirect" href="http://www.yourtoolbar.com/somepage.com" />
```

you can easily add the menu to be displayed when the button is clicked by inserting <MENU></MENU> tags shown below:

```
<BUTTON id="some_id" caption="The caption you need" img="5" hint="hint" href="http://www.yourtoolbar.com/somepage.com" command="redirect">
  <MENU id="some_menu_id" type="Single">
    <ITEM id="tb_item_1" caption="Login" img="1" hint="" href=http://www.yourtoolbar.com/login.asp command="redirect"/>
    <ITEM id="tb_item_2" caption="Forgot password?" img="4" hint="" href="http://www.yourtoolbar.com/forgotpassword.asp" command="redirect"/>
  </MENU>
</BUTTON>
```

Please note that the <BUTTON ... /> split to <BUTTON> ... </BUTTON>

In the example above the menu will pop-up when the button is clicked. The menu can have 2 different types: type="Single"  and type="Split" . In the latest case the button itself will redirect the user to one location while clicking on a small button with arrow will show the menu.

By img= attribute you can specify the image to be displayed on the toolbar button that triggers this menu. This setting is similar to setting image= attribute for the <BUTTON>.

```
...  
<MENU id="some_id" image="your_button.bmp" hot_image="hot_button.bmp" type="Split">  
...
```

See also: <ITEM> tag, <BUTTON> tag.

<ITEM> tag

To add new menu item to the existing menu or submenu just place the following line in between <MENU></MENU> tags:

```
<ITEM id="itm_mypage1" caption="My menu item" img="1" hint=""  
href="http://www.yourtoolbar.com/mypage.html" command="redirect"/>
```

In the above fragment the caption is the text that will be shown in the menu.

The img attribute contains the index of the image in the icons.bmp file.

This file is a Windows bitmap file that has to be like the following:



The toolbar supports 16 x 16 pixels bitmaps on the toolbar buttons.

The img="1" setting will reference the first 16 x 16 image in the icons.bmp file. (It is the picture with a smiling sun in this example).

Id attribute contains identifier for the menu item. This identifier can be used to control visibility of that item from the toolbar options page. The identifier has to be unique across all the toolbar elements.

The hint setting allows you to specify the text that will be shown in the browser status line when the customer rolls the mouse over the menu item.

You can make the submenu caption to be bold or italic by using [b][/b] and [i][/i] tags in the following way:

```
<ITEM id="tb_item1" caption="[b]Bold submenu caption[/b]"/>  
<ITEM id="tb_item2" caption="[i]Italic submenu caption[/i]"/>  
<ITEM id="tb_item3" caption="[b][i]Bold and Italic submenu caption[/i][/b]"/>
```

The href attribute is the URL of the page to which the users will be redirected when they choose the item from the menu (this will be used only if the attribute command is set to "redirect").

The command attribute defines the action for the menu item when it is chosen. command="redirect" means that choosing this menu item will redirect the user to another location on the web specified by href attribute. By defining additional commands you can add sophisticated behavior to the menus.

The command can also be:

- command="uninstall" – uninstalls the toolbar.
- command="update" – update the toolbar.
- command="reload" – reloads the toolbar .XML file.

- command="Highlight" – toggles Highlighting of the words in a search page on/off.
- command="ZoomIn" and command="ZoomOut" zooms the current HTML page.
- command="ResetZoom" - Reset zoom to normal (100%)
- command="ClearCookies" - Clears cookies in the user browser.
- command="ClearCache" - Clears browser cache.
- command="ClearHistory" - Clears search history.
- command="BlockPopups" – Toggles Pop-up blocker on/off.
- command="AllowPopups" – Adds currently visited website to the pop-up whitelist.
- And so on for all commands existing in the <COMMANDS> section.

You can also define custom additional commands in <COMMANDS> section of the configuration file like <CHANGELAYOUT>, <SWITCHCOMMAND> or <WEBJUMP>.

By setting the visibility="0" attribute, you can make the menu item not to appear by default. It can be enabled by from the options page.

<ITEM> tag and submenu items

Adding submenu items is done in the same way as adding new menu items. The only difference is that you have to put the <ITEM> tag in between of two another <ITEM> tags. The following fragment of configuration file demonstrates this. (It defines 2 submenu items called "History" and "Science" under a menu item called "Books". The menu itself is shown when the user clicks the "Order" button):

```
<BUTTON caption="Order" img="18" hint="" href="http://www.yourtoolbar.com/shop"
command="redirect">
  <MENU type="Split">
    <ITEM caption="Books" img="1" hint="" href="" command="redirect">
      <ITEM caption="History" img="1" hint=""
href="http://www.yourtoolbar.com/shop/category.asp?a=history" command="redirect" />
      <ITEM caption="Science" img="1" hint=""
href="http://www.yourtoolbar.com/shop/category.asp?a=Science" command="redirect" />
    </ITEM>
  </MENU>
</BUTTON>
```

You can have unlimited number of menu items and submenu items you can also define sub-sub and sub-sub sub items as you need without any limits.

<SEPARATOR> tag

This tag inserts a horizontal or vertical separator line between menu or submenu items or between buttons. The separator is useful to divide the items that are logically different.

```
<ITEM caption="Login" img="1" hint="" href="http://www.yourtoolbar.com/login.asp"
command="redirect"/>
<SEPARATOR/>
<ITEM caption="Uninstall" img="4" hint="" href="" command="uninstall"/>
```

In the above fragment <SEPARATOR/> will insert the line in between "login" and "Uninstall" menu items.

<COMBO> tag

You can add editable combo box search field to the toolbar. To do this you need to use <COMBO> tag. Example:

```
<COMBO id="se_search_text" name="se_search_text" hint="" command="musicSearch" limit="40"
histmax="10" ptext="classic">
  <WIDTH>100</WIDTH>
</COMBO>
```

COMBO tag has a following set of attributes:

- name specifies the name of the search box. Combo box text can be accessed via substitutable variable with a % sign preceding the combo name like this:
http://www.yourtoolbar.com/search?q=%se_search_text
- hint – specifies the “tooltip” message that will be shown when the user rolls the mouse over the Search box.
- command specifies the WEBJUMP command to be executed when the user clicks “Enter” or just “drag-and-drops” text fragments into the search box. See the commands section below on how to define the WEBJUMP command.

```
<WEBJUMP newbrowserwindow="false"
href="http://www.yourtoolbar.com/search?q=%se_search_text" name="musicSearch" />
```

- limit specifies how many characters the user can type into that Search field (maximal length of the search terms).
- histmax - how many items to keep in Search box history.
- id attribute contains identifier for the <COMBO>. This identifier can be used to control visibility of that combobox from the toolbar options page. Identifier has to be unique across all the toolbar elements.
- Using <WIDTH>100</WIDTH> you can specify the width for that Search box in pixels. You can specify several widths for the combo box. The default value is the first in the list. The other values are the values that the customer can choose from the “options page” as defined in <SETTINGS> section (see below).
- ptext – the default text that will be entered into the combobox

The combo box can display a static text that disappears once the users starts to input. Several additional attributes are used for this effect:

- text – the string of text to be displayed (will disappear when the user types something in)
- fname – font name
- fsize – font size

```
<COMBO text="Enter text here" fname="Verdana" fsize="16"
href="http://www.yourtoolbar.com/search?q=%se_search_text" name="musicSearch" />
```

By setting the visibility="0" attribute, you can make the combo box not to appear by default. It can be enabled by from the options page.

<COMBO> tag for select-type combo boxes (non-editable)

You can add non-editable combo box using <COMBO> tag and several <VALUE> tags. For example:

```
<COMBO id="se_search_option" name="se_search_option" hint=""
command="musicSearch">
  <WIDTH>100</WIDTH>
  <VALUE display="Artist" >Artist</VALUE>
  <VALUE display="Single" >Single</VALUE>
  <VALUE display="Album" >Album</VALUE>
</COMBO>
```

In that case the following attributes are supported:

- Name specifies the name of the search box. Combo box text can be accessed via substitutable variable like this:

http://www.yourtoolbar.com/search?type=%se_search_option. When the user selects one of the options from the list the value specified in display= of <VALUE> will be substituted instead of %se_search_option.

- hint – specifies the “tooltip” message that will be shown when the user rolls the mouse over the Search box.
- Command specifies the WEBJUMP command to be executed when the user clicks “Enter” being in that search box. See the commands section below on how to define the WEBJUMP command.

```
<WEBJUMP newbrowserwindow="false"
href="http://www.yourtoolbar.com/search?q=%se_search_text" name="musicSearch"/>
```

- id attribute contains identifier for the <COMBO>. This identifier can be used to control visibility of that combobox from the toolbar options page. Identifier has to be unique across all the toolbar elements.
- Using <WIDTH>100</WIDTH> you can specify the width for that Search box in pixels. You can specify several widths for the combo box. The default value is the first in the list. The other values are the values that the customer can choose from the “options page” as defined in <SETTINGS> section (see below).

<TEXT> tag

You can create a text label with any text by using <TEXT> tag:

```
<TEXT id="tb_text" hint="Some hint" caption="Some text"/>
```

In the fragment above the caption attribute contains the text to be shown.

Id attribute contains identifier for the text label. This identifier can be used to control visibility of that combobox from the toolbar options page. Identifier has to be unique across all the toolbar elements

The hint setting allows you to specify ‘tooltip’ text to show when the user rolls the mouse over the button.

An optional img attribute specifies index of the icon in the icons.bmp file. This icon will be shown on the left from the text label.

By setting the visibility="0" attribute, you can make the text not to appear by default. It can be enabled by from the options page.

<EDIT> tag

You can create edit box inside the toolbar by using <EDIT> tag:

```
<EDIT id="edt_user" name="edt_user" hint="" command="loginuser" limit="40"
pext="anonymous">
    <WIDTH>100</WIDTH>
</EDIT>
```

Attributes of the EDIT tag are following:

- name specifies the name of the edit box. Edit box text can be accessed via substitutable variable like this:
http://www.yourtoolbar.com/login.php?username=%edt_user
- hint - specifies the message that will pop-up when the user rolls the mouse over the edit box.
- command specifies the WEBJUMP command to be executed when the user clicks “Enter” or just “drag-and-drops” text fragments into the edit box. See the commands

section below on how to define the WEBJUMP command like the one below.

```
<WEBJUMP newbrowserwindow="false"
href="http://www.yourtoolbar.com/login.php?username=%edt_user" name="loginuser"/>
```

- limit specifies how many characters the user can type into the edit box (maximal length of the search terms).
- id attribute contains identifier for the <EDIT>. This identifier can be used to control visibility of that edit box from the toolbar options page. Identifier has to be unique across all the toolbar elements.
- ptext – the default text entered into the editbox
- Using <WIDTH>100</WIDTH> you can specify the width for that edit box in pixels. You can specify several widths for the edit box. The default value is the first in the list. The other values are the values that the customer can choose from the "options page" as defined in <SETTINGS> section (see below).

By setting the visibility="0" attribute, you can make the edit box not to appear by default. It can be enabled by from the options page.

<PASSWORD> tag

You can create password box (that hides all input characters with *) using <PASSWORD> tag:

```
<PASSWORD id="pwd_user" name="pwd_user" hint="" command="loginuser" limit="40">
<WIDTH>100</WIDTH>
</PASSWORD>
```

Attributes of the <PASSWORD> tag are the same as for <EDIT> tag. The text from the password box can be accessed via substitutable variable containing percent sign % in behind of the password box name like:

http://www.yourtoolbar.com/login.php?username=admin&pwd=%pwd_user

By setting the visibility="0" attribute, you can make the password box not to appear by default. It can be enabled by from the options page.

<CHECKBOX> tag

Using <CHECKBOX> you can create 2-state checkbox control on the toolbar.

```
<CHECKBOX name="checkbox1" id="cb_cbs1" caption="Allow changes?" hint="Tick to allow your changes
to be submitted"/>
```

Checkbox has the following attributes:

- name - specifies the name of the checkbox. The value of the checkbox can be accessed via substitutable variable containing percent sign % in behind of the checkbox name like:

<http://www.yourtoolbar.com/applystatus.php?status=%checkbox1>

If the checkbox is marked %checkbox1 value is 1, otherwise it is 0.

- id attribute contains identifier for the <CHECKBOX>. This identifier can be used to control visibility of that checkbox from the toolbar options page. Identifier has to be unique across all the toolbar elements.
- caption – text label to the right of the checkbox
- hint – specifies the message that will be shown when the user rolls the mouse over the checkbox

By setting the visibility="0" attribute, you can make the check box not to appear by default. It can be enabled by from the options page.

<BANNER> tag

This tag gives you much more flexibility than any other. It will allow you to create a mini webpage inside your toolbar with any content including animations, forms, FLASH e.t.c. This mini webpage can be refreshed periodically or while the user surfs the web. <BANNER> is perfectly suited for implementation of Ticker-tape scrolling news, flashing notifications and pop-up generation. You can make a <BANNER> hidden (setting it's width to 0) and use Javascript access to the current page so that you can do Javascript actions transparently for the end user.

<BANNER> tag has a following format:

```
<BANNER id="id_banner_1" caption="news" url="http://www.yoursite.com/toolbar_news.html" width="200" height="16" local="news_local.html" sync="BeforeNavigate" expire="10"/>
```

It has the following attributes:

- 'url' is an URL of an HTML page to be displayed inside the banner.
- 'local' specifies a local HTML page to load if the URL specified by href attribute is inaccessible.
- 'width' and height specify the size of the banner in pixels.
- 'caption' is a string of text that is displayed while the banner is loading.
- Optional 'sync=' attribute tells that the banner should be reloaded while user browses the web. It can be set to "BeforeNavigate" or to "OnDocumentComplete". The first tells to refresh the banner before the main page in browser loads, OnDocumentComplete tells to refresh after the main page has been downloaded completely.
- Optional 'expire=' attribute forces the banner to reload itself in specified time periods (defined in minutes).

NOTE: If both expire= and sync= are omitted the banner will get reloaded with each new browser window open.

- Optional autowidth="1" attribute lets the banner to extend it's right edge to occupy all the free space on the toolbar:

```
<BANNER id="id_banner_1" url="http://www.yoursite.com/toolbar_news.html" autowidth="1" sync="BeforeNavigate" expire="10"/>
```

If you have any links inside the banner, they will open a page in the main browser window. If you want them to open inside the banner instead, you have to add #inbanner to the end of the URL like:

```
<a href="http://www.yourtoolbar.com/#inbanner">
```

NOTE: If you use a frames inside the banner, the links inside the <frameset> structure also have to have #inbanner added to the end.

By setting the visibility="0" attribute, you can make the banner not to appear by default. It can be enabled by from the options page.

<BUBBLE> tag



Defines minipage that opens up when the user clicks a button in a toolbar. To add the minipage you have to put the <BUBBLE> tag in between <BUTTON> </BUTTON> tags like

it is shown in a following fragment of configuration file.

```
<BUTTON .....>
<BUBBLE type="Split" width="500" height="200" local="local_bubble.html"
href="http://www.yourtoolbar.com/tb/bubble.html" />
</BUTTON>
```

This defines an HTML 500x500 pixels mini webpage from <http://www.yourtoolbar.com/tb/bubble.html> to be shown right near the button when the arrow on the left of the button is clicked.

Attributes of the <BUBBLE> tag:

- type – type of the <BUBBLE> defines whether it is displayed when the button is pressed itself (Type="Single" ) or when the arrow near the button is pressed (type="Split" ) the button itself can have a separate action associated.
- width – width of the HTML mini page in pixels.
- height – height of the HTML mini page in pixels.
- href – URL of the html page to show in the Mini page. Can be any .html file.
- local – name of the local file that is displayed when the one specified in the href is not accessible. This file needs to be provide in within the toolbar package.

The bubble will be closed automatically if you move to another button in the toolbar or switch to another page. To close it from HTML page, you have to provide a link with URL set to bubble://close.

```
<a href="bubble://close">Cancel</a>
```

Links inside a bubble are open in a main browser window by default. If you need the link to open inside the bubble please add #inbanner to the end of that link.

```
<a href="http://www.yourtoolbar.com/#inbanner">
```

<SPACE> tag

Adds a horizontal space with given width:

```
<SPACE width="60" />
```

<INCLUDE_XML> tag

INCLUDE_XML tag allows you to implement advanced and interactive toolbars. Dynamic toolbar behavior and Multiple configurations are achieved using the INLCUDE_XML tag. With the help of this tag you can achieve server/toolbar interaction having dynamic menus and targeted interactive content in your toolbar. Being combined with macro substitutions like Toolbar ID, User ID, Username, UserPassword, current URL e.t.c. this allows to achieve personal appearance for the toolbar users and provide better customer interaction.

The basic format for INCLUDE_XML is the following:

```
<INCLUDE_XML filename="http://www.yourserver.com/toolbar/toolbar.xml"/>
```

This will tell the toolbar to query the file located on your server at <http://www.yourserver.com/toolbar/toolbar.xml> each time the browser with the toolbar is open. Changing this file on your server will allow dynamically change the toolbar appearance for all your customers. The following attributes are supported for INCLUDE_XML

tag:

- filename – a file to be included. It can be a local file like tb12.xml or this can be a server side file like <http://www.yourtoolbar.com/toolbarconf.xml>. You can also make this to contain a reference to a server side script as in the below example:

```
<INCLUDE_XML filename="http://yourtoolbar.com/news.php?URL=%toolbar_id"/>
```

- expire – defines the period in minutes to refresh the file. The default value of 0 means that the XML file is refreshed when the browser starts. Setting this to non-zero value will allow to refresh XML file periodically. The file downloaded is being cached so that if the internet connection fails the cached version will be used till the connection is reestablished. You can use expire= to notify the users while they surf the internet.

```
<INCLUDE_XML filename="http://yourtoolbar.com/news.xml?id=%toolbar_id&user=%user_id"
expire="10"/>
```

NOTE: Setting expire to big value will allow to minimize traffic that the toolbar generates to your server in dynamic mode. The cached versions of the files will be used and the server will be requested only after expiration of the cache.

- layout – this numeric attribute is used to achieve multiple toolbar configurations. The default setting for this attribute is 0. The toolbar parses .XML files according to the current layout specified for the toolbar (default is specified inside the <TOOLBAR> tag). Using the special command CHANGELAYOUT you can change the layout used for the toolbar achieving multiple toolbar configurations. You can use multiple toolbar configurations to have your toolbar in several languages or have your toolbar in switchable between minimal and full configuration.
- sync – this optional property is used to trigger refreshing of the XML file while the user surfs the net. The possible options are: BeforeNavigate and onDocumentComplete. An XML is refreshed each time a new document is opened in the browser (i.e. while user surfs the net). These values have the following difference: BeforeNavigate is triggered before the page is downloaded, onDocumentComplete is triggered after the page is downloaded completely.

```
<INCLUDE_XML filename=http://yourtoolbar.com/news.php?id=%toolbar_id&user=%user_id"
sync="BeforeNavigate"/>
```

- urltemplate – is used in conjunction with sync= attribute to trigger the synchronization only when specific pages are visited. This is useful to update the toolbar appearance after the user accesses specific sites or specific pages on these sites. You can specify web page name here or website name.
urltemplate="specialpage.php" or urltemplate="www.specifcsite.com"
- no_cache – when this attribute is set to 1, the included files will not be cached.
- local – if the file specified in the filename= attribute is unavailable (e.g. the system is offline and can not load an XML from the web) then the local file specified here would be loaded instead.

<INCLUDE_CUSTOM_XML> tag

Like <INCLUDE_XML>, this tag allows you to dynamically change contents of the toolbar, but the method is different. Instead of pointing to a file or URL, new content is obtained from a javascript.

Example:

This line shall be somewhere in the toolbar XML:

```
<INCLUDE_CUSTOM_XML name="custom_1"/>
```

The following HTML code will place a string with a random number in toolbar. It will be positioned where the above line is encountered in XML. Have a look at the [Accessing toolbar properties via Javascript](#) section to learn more about using JavaScript to conjunction with the toolbar.

```
<script language="JavaScript" type="text/javascript">
var m_TBObj = null;
function ToolBarInit(softomate_toolbar) {
    m_TBObj = softomate_toolbar;
}
function customxml () {
    if(m_TBObj) {
        var s = Math.random() * 10 + "";
        var n = s.substr(0,1);
        m_TBObj.CustomXML("custom_1") = '<toolbar><text id="12312" caption="Number
is ' + n + '"/></toolbar>';
        m_TBObj.Reload();
    }
}
</script>
<button onclick="javascript:customxml();">CustomXML Demo</button>
```

Using multiple configurations for your toolbar

To use multiple configuration for the toolbar you need to define several includable .xml files via `<INCLUDE_XML>` tag with different numeric values for the layout=. To switch between layouts CHANGELAYOUT command is used. This command can be associated with any button or menu item so clicking the button will change appearance of the toolbar instantly. Most usual use for multiple layouts is Multilanguage toolbar. The multiple layouts are achieved with the following:

```
...
<INCLUDE_XML filename="tb_english.xml" layout="0"/>
<INCLUDE_XML filename="tb_german.xml" layout="1"/>
...
<COMMANDS>
    <CHANGELAYOUT name="to_eng" layout="0"/>
    <CHANGELAYOUT name="to_ger" layout="1"/>
    <LOCALHTML name="options" href="options.html"/>
</COMMANDS>
...
```

Associate any button or menu item with a command "to_ger" and clicking it will immediately trigger the toolbar to parse tb_german.xml.

Macro substitutions

There are a lot of variables available in the toolbar that can be substituted into the url that the toolbar uses for BANNER, BUBBLE and INCLUDE_XML tags. These substitutions can also be put into any URL (WEBJUMP command or href attribute for BUTTON/MENU ITEM). The following macro substitutions are available:

- %toolbar_id – unique toolbar ID (generated automatically, unique for each toolbar installation, but stays the same after toolbar is updated or reinstalled)
- %toolbar_version – toolbar version (from the version.txt file).
- %currentlayout – current layout used for the toolbar (see CHANGELAYOUT command)
- %url – current URL opened in the browser.
- %domain – current domain open in the browser.
- %plain_url – not encoded URL, can be used in button captions.
- %plain_domain – not encoded domain name, can be used in button captions.
- %user_name – user name (this variable is used to store the username. Value for this variable could be set via Javascript see the below section for details).

%user_pass – user password. (this variable is used to store a password. The value for this variable can be set via Javascript see the below section for details).

%user_id – user ID. (this variable contains userid and value for this variable could be set via Javascript see the below section for details).

%selection – current text selection without HTML formatting.

%htmlselection – current text selection with HTML formatting.

%title – encoded page title, can be used in URLs.

%plain_title – page title not encoded, can be used in button captions.

%meta – encoded meta keywords for the page.

%plain_meta – meta keywords for the page.

%encoding – current char set for the open page.

%clipboard – text in the clipboard.

%promoCode – it has no special meaning, you can use it to store any value.

%AffiliateID – If there is a file called `affid.dat` in the folder where the `toolbar.dll` is located. This variable simply contains the contents of that file. If the file does not exist this variable is empty. Refer to the [Using affiliate capabilities](#) chapter for details.

%Var1, %Var2, ..., %Var10 – these variables have no special meaning, you can use them to store any value and use it in macros and javascript. This gives you ability to extend the toolbar functionality.

%SVar1, %SVar2, ..., %SVar10 – these variables have no special meaning, you can use them to store any value and use it in both macros and javascript. This variables are secured. You cannot read the values in Javascript, you can only assign new values to them. This gives you ability to extend the toolbar functionality.

Note: "V" and "SV" in the %Var and %SVar must be capital letters.

Plus, you can substitute value currently entered into any `<PASSWORD>`, `<EDIT>`, `<CHECKBOX>` or `<COMBO>` control by preceding the name of that control with the percent sign. Like: `%<combo_name>` - will substitute text from the combo box with specified name.

Example:

```
<INCLUDE_XML filename="http://www.yoursite.com/getrank.asp?toolbar_id=%toolbar_id&URL=%url"
sync="OnDocumentComplete"/>
```

Accessing toolbar properties via Javascript

It is possible to access toolbar properties from Javascript. So that HTML page can interact with the toolbar. Please note that some of the options are read only from Javascript and can not be set.

To access the toolbar via Javascript you need to implement a Javascript function called `ToolBarInit` into HTML page:

```
<script>
var MyTool = null;

function ToolBarInit (tool)
{
    MyTool = tool;
}

function setname ()
{
    MyTool.userName = document.all.uname.value;
    MyTool.userid = document.all.uid.value;
    MyTool.userpasswd = document.all.upass.value;
    MyTool.Reload ();
}
</script>
<body onload="">
```

```
UserName:<input name="uname"><br>
UserPasswd:<input name="upass"><br>
Userid:<input name="uid"><br>
<Button onclick="setname()">Set variables</button>
</body>
```

Properties, accessible using JavaScript:

- ver – toolbar version. (read only)
- toolbarid – unique identifier of the toolbar (read only)
- userid – user ID
- userName – user name
- userPasswd – user password (write only)
- url – current URL (read only)
- domain – current domain (read only)
- afterinstallurl
- updateurl
- afterupdateurl
- afteruninstallurl
- autoupdate – flag used to turn autoupdate on/off
- toolbarFace – background colour of the toolbar
- AutoSearch – an URL to capture address bar searches
- promoCode – it has no special meaning, you can use it to store any value
- AffiliateID – If there is a file called affid.dat in the folder where the toolbar.dll is this variable simply contains the contents of that file. If the file is not existent this variable is empty
- Var(1), Var(2), ..., Var(10) – these variables have no special meaning, you can use it to store any value and use it in both macros and javascript
- SVar(1), SVar(2), ..., SVar(10) – these variables have no special meaning, you can use it to store any value and use it in both macros and javascript (write only)

Note: "V" and "SV" in the %Var() and %SVar() in the JavaScript must be capital letters.

- Font – name of the font used in the toolbar
- FontSize – size of the font used in the toolbar

Toolbar also exposes a method named Reload() that you can use from Javascript to reload the contents of the toolbar. Call that method to get the toolbar refreshed. Use this if you have dynamic inclusions via INCLUDE_XML in your toolbar to refresh the toolbar only when required.

Using national non-latin symbols in the toolbar

You should write them using the Unicode notation, like ä for the symbol ä. Where 00E4 is the code for the symbol. You can look for the symbols' codes at <http://www.unicode.org/charts/>

For example: symbols such as äöå (äåö) should be written in a following manner:

```
&#x00E4;&#x00F6;&#x00E5
```

Alternately, you can use the "UTF-8" encoding for the toolbar XML file.

Using context search

You need to have a combo or editbox on your toolbar to which the search query will be put into.

```
<COMBO id="tb_search_area" name="search_combo_box" caption="Search" hint="enter text to search" command="search1" limit="40" histmax="10">
```

In the <SETTINGS></SETTINGS> section of the configuration you should add a setting like the following one:

```
<URL id="contextSearch"
default="http://www.yourtoolbar.com/search.php?query=%search_combo_box"/>
```

Use the same name as you had used for the combo box above with a percent sign before it. It will be replaced by the value selected within the webpage.

The setting

```
<MESSAGE id="contextMenuItemName" default="Toolbar search"/>
```

controls the item name that appears in IE context menu.

Enabling the word-find feature

Word find feature will display the buttons in the rightmost position on the toolbar with the keywords typed in the editbox/combo box (when multiple comboboxes are used the first one will be used for word-find). Clicking on that buttons will move the focus to the next occurrence of the keyword on the current webpage. This feature always uses the icon number 1 from the icons file. To enable word-find please change settings for ShowFindButtons from default="0" to 1:

```
<CHECKBOX id="ShowFindButtons" default="1"/>
```

As usual, all settings could be also controlled from the options page.

<EXTERNAL_SEARCH> tag to catch search queries

Users can search via different search engines like Google or Yahoo. You can catch the search terms and put them into a search box on your toolbar so your users will have an option to get a results from your engine by simply clicking a button.

When EXTERNAL_SEARCH setting is provided, the toolbar will parse the URL that is being accessed and will extract the keywords. The following example will catch searches done on Google and put keywords into a search box named combo1:

```
<EXTERNAL_SEARCH target="combo1" engine="http://www.google.com/search" param="q"/>
```

The URL can contain wildcards: * – matches any number of characters and ? – matches single character.

```
<EXTERNAL_SEARCH target="combo1" engine="http://*google.*/*" param="q"/>
```

The EXTERNAL_SEARCH tag also has encoding attribute as the WEBJUMP command does. It defines the encoding for the search string. See the Commands section for details on values supported for encoding= attribute:

```
<EXTERNAL_SEARCH target="combo1" engine="http://www.mysite.com/search" param="q"
encoding="65001"/>
```

Performing redirections and pop-ups while the user surfs the net

You can perform special actions when user searches for a given set of keywords/navigates to specific sites by using BANNER tag with sync= attribute. You should create an invisible banner (width="0") that will contain a HTML file with Javascript inside. This banner should be refreshed while the user surfs the net:

```
<banner id="banner" url="popup.html" sync="onDocumentComplete" width="0" />
```

The popup.html contains the following script that checks if the new URL points to a search engine and if the search query contains any of the given keywords:

```
<script>
var SList=Array();

SList[0]=Array(4);
SList[0][0]="google.ru";
SList[0][1]="q=";
SList[0][2]="test|toolbar|besttoolbars";
SList[0][3]="http://besttoolbars.net";

SList[1]=Array(4);
SList[1][0]="yahoo.com";
SList[1][1]="p=";
SList[1][2]="test|toolbar|besttoolbars";
SList[1][3]="http://besttoolbars.net";

var MyTool=null;
function DocumentComplete(tool)
{
MyTool=tool;
var url=unescape(tool.url);
for(i in SList)
    {
        idx=url.indexOf(SList[i][1]);

        if(url.indexOf(SList[i][0])!=-1&idx!=-1)
            {
                idx2=url.indexOf("&");
                if(idx2!=-1)idx2=url.length;
                keywords=url.substr(idx,idx2);

                KWD=SList[i][2].split("|");
                for(j in KWD)
                    if(keywords.indexOf(KWD[j])!=-1)
                        {
                            window.open(SList[i][3]); return;
                        }
            }
    }
}
</script>
```

If you want to catch specific websites you can modify this script:

```
<script>
var SList=Array();

SList[0]=Array(2);
SList[0][0]=".google.ru";
SList[0][1]="http://besttoolbars.net";

SList[1]=Array(2);
SList[1][0]=".yahoo.com";
SList[1][1]="http://besttoolbars.net";

var MyTool=null;
function DocumentComplete(tool)
{
MyTool=tool;
var url=unescape(tool.domain);
for(i in SList)
    {
        if(url.indexOf(SList[i][0])!=-1)
            {
                window.location=SList[i][1]; return;
            }
    }
}
</script>
```

<DNSCATCH> tag to catch DNS and Error 404

To use this feature you need to add the following code to the <SETTINGS> section of the XML file:

```
<DNSCATCH href="http://yoursite.com/search?text=%s"/>
```

%s will be replaced with the site URL that was not found or when the page is not available. *NOTE: When the connection fails it is sometimes hard to find out whether this is DNS error or DNS unavailable so the AUTOSEARCH url can be launched. We recommend that you use both AUTOSEARCH and DNSCATCH.*

<AUTOSEARCH> tag to capture address bar searches

To use this feature you need to add the following code to the <SETTINGS> section of the XML file:

```
<AUTOSEARCH href="http://yoursite.com/search?text=%s"/>
```

%s will be replaced with the word being searched when user types something into the address bar.

<HOMEPAGE>

You may add the following line to the <SETTINGS> section of the toolbar .XML file and the default homepage of the user will be set to the one you had defined.

```
<HOMEPAGE href="http://yoursite.com/">
```

<COMMANDS> tag

You can define the following commands: <WEBJUMP>, <LOCALHTML>, <CHANGELAYOUT>, <SWITCHCOMMAND>, <ZOOMIN>, <ZOOMOUT>, <RESETZOOM>, <CLEARHISTORY>, <CLEARCACHE>, <CLEARCOOKIES>, <HIGHLIGHT>, <BLOCKPOPUIS>, <ALLOWPOPUIS>, <ENABLEFLASH>, <ENABLEIMAGE>, <CLEARCOUNT>, <HIDEBUTTON>, <CLEARRECYCLEBIN>, <CLEARCLIPBOARD>, <CLEARADDRESSBAR>, <CLEARTEMP>, <REMOVERECENT>, <CLEARAUTOFILL>, <CLEARIEHISTORY>, <SHELLEXECUTE>, <COMMANDCHUNK>, <RELOAD>, <HIDETOOLBAR>, <UNINSTALL> and <UPDATE>.

The command definitions have to be placed in between <COMMANDS> and </COMMANDS> tags in the configuration file.

If you have defined a command named newcommand1 it could be then associated with any button, menu item or COMBOBOX, EDIT or PASSWORD control. To associate with a button please use:

```
<BUTTON caption="The caption you need" img="5" hint="hint" command="newcommand1"/>
```

to associate with a menu item please use:

```
<ITEM caption="My menu item" img="" command="newcommand1"/>
```

The following sample represents commands definition that is usually used in the toolbar:

```
<COMMANDS>

<!-- Change zoom -->
<ZOOMIN name="ZoomIn"/>
<ZOOMOUT name="ZoomOut"/>

<!-- Reset zoom to the original (100%) -->
<RESETZOOM name="ResetZoom"/>

<!--Clears history in combo boxes -->
<CLEARHISTORY name="clearhistory"/>
```

```
<!--Highlights combo text in document -->
<HIGHLIGHT name="Highlight"/>

<!-- Reloads toolbar XML -->
<RELOAD name="reloadToolbar"/>

<!--Popup windows killer (toggle) default = 1(enable function)/0(disable function) -->
<BLOCKPOPUPS name="blockPopups" cursor="blocked.cur" wave="click.wav" default="1"/>

<!-- Erases browser cookies for the current user of computer-->
<CLEARCOOKIES name="clearCookies" message="This will erase your cookies. Are you sure?"/>

<!-- Erases browser cache for the current user of computer-->
<CLEARCACHE name="clearCache" message="This will erase your cache. Are you sure?"/>

<!-- Uninstall the toolbar -->
<UNINSTALL name="uninstall"/>

<!-- Check if update is available and perform the update -->
<UPDATE name="update"/>

<!-- Enable/disable images in webpages -->
<ENABLEFLASH name="flena"/>

<!-- Enable/disable flash in webpages -->
<ENABLEIMAGE name="imge"/>

<!-- Hide a button -->
<HIDEBUTTON name="command_name" id="button_id"/>

<!-- Clear Recycle Bin -->
<CLEARRECYCLEBIN name="command_name"/>

<!-- Clear clipboard buffer -->
<CLEARCLIPBOARD name="command_name"/>

<!-- Hide toolbar -->
<HIDETOOLBAR name="hidetoolbar"/>

<!-- Clear address bar of the browser -->
<CLEARADDRESSBAR name="clearaddressbar"/>

<!-- Clear system TEMP folder -->
<CLEARTEMP name="cleartemp"/>

<!-- Clear the recent documents list in the start menu -->
<REMOVERECENT name="removerecent"/>

<!-- Clear saved strings entered to HTML forms and passwords in IE -->
<CLEARAUTOFILL name="clearautofill"/>

<!-- Clear browser history of visited websites -->
<CLEARIEHISTORY name="cleariehistory"/>

</COMMANDS>
```

Some commands have additional attributes and described below.

<LOCALHTML> command

The <LOCALHTML> tag is used to reference HTML pages, and other local files that you distribute with your toolbar (in the toolbar download package).

For example when you distribute an HTML page called myinfo.html and would like it to be opened in a new "modal" browser window you can define the following command:

```
<LOCALHTML name="myinfo" href="myinfo.html" newbrowserwindow="modaldialog"/>
```

A Modal browser window means that you have to close it prior accessing other browser windows.

The options possible for the newbrowserwindow attribute are: "true", "false" and "modaldialog". True means that the html page will be opened in a new window, false means

that it will be opened in the same browser window and modal dialog means that it will be opened in a new window that has to be closed before the user can continue to browse (useful for dialog-box pages). Another attribute that is supported by LOCALHTML command is the options attribute that defines how the open the window is formatted. Here is an example demonstrating use of the options attribute:

```
<LOCALHTML href="about.html" name="about" newbrowserwindow="modal dialog"
options="status:no;help:no;dialogHeight:220px;dialogWidth:450px;scroll:no;" />
```

Note: LOCALHTML is also used to put any file into the distribution package. This way you can distribute additional Graphics files, HTML help pages, DLL's or .EXE applications with your toolbar. Anything that is referenced using LOCALHTML gets included into .cab. Use:

```
<LOCALHTML name="myapp" href="myapp.exe" />
```

to include an .EXE named myapp.exe into your distribution.

<WEBJUMP> command

The WEBJUMP command has the following syntax:

```
<WEBJUMP name="newcommand1" href="http://yourtoolbar/somepage.html"
newbrowserwindow="false" />
```

The attributes supported are:

- newbrowserwindow
- options
- post
- encoding
- parse_events

newbrowserwindow= attribute can be set to "true", "false" or "modal dialog". True means that the html page will be opened in a new window, false means that it will be opened in the same browser window and modal dialog means that it will be opened in a new window that has to be closed before the user can continue to browse (useful for dialog-box pages).

options= attribute defines how the window is formatted. Here is an example demonstrating use of the options attribute:

```
<LOCALHTML href="about.html" name="about" newbrowserwindow="modal dialog"
options="status:no;help:no;dialogHeight:220px;dialogWidth:450px;scroll:no;" />
```

post= attribute is used to submit a data via HTTP POST request (submitting a form) instead of HTTP GET.

```
<WEBJUMP name="newcommand1" post="Var(1)=%combol&Var(2)=%domain"
href="http://yourtoolbar/formpost.php"/>
```

encoding= attribute specifies a codepage (or encoding) that will be used inside the URL to convert %<variable name> substitutions. For example, if the server accepts search queries in the UTF-8 (unicode) format. The encoding has to be set to unicode (65001). Then the text inputs into search fields will get converted to UTF-8 (unicode), so the server could understand them. You can find a table with standard codepage numbers in the appendix [Standard Code Pages](#).

```
<WEBJUMP newbrowserwindow="false" href="http://www.yoursite.com/search?sq=%search"
name="keMdXGRo" encoding="65001" />
```

The default encoding is 1252 (Western European). In case you need to omit encoding and pass the texts typed as is you can use special value for the encoding tag: `encoding="-1"`
`parse_events=` allowed to change toolbar options from page where the command leads to.

<CHANGELAYOUT> command

The syntax for CHANGELAYOUT command is the following:

```
<CHANGELAYOUT name="to_german" layout="1"/>
```

There are two attributes: `name` – a name of the command that can be used in button or menu item `command=` attribute, `layout` – defines the numeric value of the layout to switch to. See Multiple layouts section for explanations.

<SWITCHCOMMAND> command

SWITCHCOMMAND has the following syntax:

```
<SWITCHCOMMAND name="switchcommandname" target="target_comboboxcommand"
command="new_command_name"/>
```

It can be used to switch the search engines on the fly by using a code like the following:

```
<COMBO id="combo_id" name="combo" command="search1" fname="Tahoma" fsize="13" limit="40"
histmax="10" dwidth="100" kind="editable">
<WIDTH>100</WIDTH>
</COMBO>
<BUTTON id="swbtn" caption="Switch Search Engine 2" img="8" command="sw_engine"/>
<COMMANDS>
<WEBJUMP href="http://www.yoursite.com/search?q=%combo" name="search_engine_1"/>
<WEBJUMP href="http://www.anotheryoursite.com/?q=%combo" name="search_engine_2"/>
<SWITCHCOMMAND name="sw_engine" target="search_engine_1" command="search_engine_2"/>
</COMMANDS>
```

Additionally, the SWITCHCOMMAND can change a button text and icon if used like below:

```
<SWITCHCOMMAND name="sw_engine" target="search_engine_1" command="search_engine_2"
switchbutton="buttn" switchtext="New label" switchicon="3"/>
```

Where 'switchbutton' is an id of the button being changed. It may be only a button with the same command as combo-box command; 'switchtext' is the new label on the button and 'switchicon' specifies a new icon for it. If the button uses an image tag instead of `img`, the 'switchbmp' should be used instead of 'switchicon'.

Here is an example of 3 search engines switching:

```
<COMMANDS>
<WEBJUMP name="searchGoogle" href="http://www.google.com/search?q=%search"/>
<WEBJUMP name="searchYahoo" href="http://search.yahoo.com/search?p=%search"/>
<WEBJUMP name="searchMSN" href="http://search.msn.com/results.aspx?q=%search"/>
<SWITCHCOMMAND name="sw_google" command="searchGoogle" target="searchGoogle"
switchbutton="btn_search" switchicon="20" switchtext="Google search"/>
<SWITCHCOMMAND name="sw_yahoo" command="searchYahoo" target="searchGoogle"
switchbutton="btn_search" switchicon="23" switchtext="Yahoo! search"/>
<SWITCHCOMMAND name="sw_msn" command="searchMSN" target="searchGoogle"
switchbutton="btn_search" switchtext="MSN search" switchicon="19"/>
</COMMANDS>

<COMBO id="tbs_combo_001441" command="searchGoogle" fname="Tahoma" fsize="13" limit="40"
histmax="10" name="search" dwidth="150" kind="editable">
<WIDTH>150</WIDTH>
</COMBO>
<BUTTON id="btn_search" caption="Google Search" img="14" command="searchGoogle">
<MENU id="tbs_button_002740" type="Split">
<ITEM id="tbs_item_013989" img="20" caption="Google" command="sw_google"/>
<ITEM id="tbs_item_018781" img="23" caption="Yahoo!" command="sw_yahoo"/>
<ITEM id="tbs_item_018141" img="15" caption="MSN" command="sw_msn"/>
</MENU>
</BUTTON>
```

Note: button command must be the same as combo-box command, otherwise button label and icon will not be changed.

<CLEARCOUNT> command

This command clears the count of blocked pop-ups.

```
<COMMANDS>
<CLEARCOUNT name="clearcount" />
</COMMANDS>
```

You can assign a menu item or button with this command.

```
<BUTTON id="bt_id" caption="Clear pop-up blocker count" img="4" command="clearcount" />
```

To display current blocked count use #cnt# inside the hint or caption of the pop-up blocker button.

<ENABLEIMAGE> command

You can switch on/off display of images by using the ENABLEIMAGE command. To use it you should define it in the COMMANDS section and assign a button or menu item to it.

```
<COMMANDS>
  <ENABLEIMAGE name="imge" />
</COMMANDS>
<BUTTON id="btimages" caption="Show Images" command="imge" />
```

<ENABLEFLASH> command

You can switch on/off display of flash by using the ENABLFLASH command. To use it you should define it in the COMMANDS section and assing a button or menu item to it.

```
<COMMANDS>
  <ENABLEFLASH name="flena" />
</COMMANDS>
<BUTTON id="btflash" caption="Show Flash" command="flena" />
```

<HIGHLIGHT> command

Highlighting allows marking search keywords with different colors on a webpage. To place a highlight button add a button with command set to Highlight:

```
<COMMANDS>
<HIGHLIGHT name="Highlight" />
</COMMANDS>
<BUTTON caption="" hint="Toggle highlighting of search terms on this page"
id="tb_btn_KVasNoxV" img="99" command="Highlight" />
```

The colors used for highlighting are got from <HIGHLIGHT> subsection of the <SETTINGS> in configuration file. The example below

```
<HIGHLIGHT>
  <COLOR>F6FF00</COLOR>
  <COLOR>00FFE4</COLOR>
  <COLOR>5AFF00</COLOR>
  <COLOR>0087FF</COLOR>
  <COLOR>FFCC00</COLOR>
  <COLOR>FF00F0</COLOR>
</HIGHLIGHT>
```

defines several different colors that will be used to highlight the search keywords within a webpage. The first keyword located will be highlighted with the color F6FF00 (yellow), the next will be highlighted with 00FFE4 (Cyan) and so on in cycle.

<BLOCKPOPUPS> command and usage of the popup-blocker feature

Pop-up blocker will block pop-up windows when it is turned on. It can play a sound and change the cursor shape when the popup window is blocked. The number of pop-ups blocked can be displayed on the toolbar.

To place a popup-blocker button add a button with a command set to blockPopups:

```
<BUTTON id="tb_blockPopups" img="1" caption="Block Popups" command="blockPopups"/>
```

Popup-blocker is a toggle-type button and it can have different text and icon when it is pressed. This is controlled by `imgp=` and `captionp=` attributes:

```
<BUTTON id="some_id" caption="Blocker disabled" captionp="#cnt# blocked" img="4" imgp="5" command="blockPopups"/>
```

`#cnt#` is a special variable that will be substituted by the total number of blocked pop-ups. You can clear this count using a CLEARCOUNT command.

To play a sound when the pop-up is blocked you can use optional attribute `wave=` of BLOCKPOPUPS command in <COMMANDS> section. Optional attribute `cursor=` of the BLOCKPOPUPS is used to define a cursor that will be shown for a short period of time when the popup is blocked.

```
<BLOCKPOPUPS name="blockPopups" default="0" cursor="blocked.cur" wave="click.wav"/>
```

Any .WAV and .CUR file can be used. To include those files into the distributive (.CAB or .EXE) please reference them via LOCALHTML command in COMMANDS section of the toolbar configuration file.

```
<LOCALHTML name="wav" href="click.wav"/>
<LOCALHTML name="cursor" href="blocked.cur"/>
```

To change the message that appears in a status bar of the IE when a pop-up is blocked please change the appropriate MESSAGE tag in SETTINGS area:

```
<MESSAGE id="PopStop" default="Pop-up window blocked"/>
```

If you want to change image on the pop-up blocker button for a short time when a pop-up is blocked you can use the BUTTON attribute `imgf=`:

```
<BUTTON img="8" imgf="9" imgp="10" caption="Popups Allowed" captionp="#cnt# blocked" id="tb_block" command="block"/>
```

You can clear blocked pop-up counter any time using CLEARCOUNT command.

NOTE: To turn pop-up blocker on by default use `default="1"` as an attribute of the BLOCKPOPUPS command in between <COMMANDS> </COMMANDS> tags.

```
<BLOCKPOPUPS name="blockPopups" default="1"/>
```

Users can temporarily disable pop-up blocking by holding the Ctrl key so if the page contains pop-up, they will be shown. Pop-ups evoked from the toolbar itself are never blocked. Plus the popups from the sites in whitelist are never blocked (See <ALLOWPOPUPS> command)

<ALLOWPOPUPS> command to allow pop-ups from certain sites (whitelist functionality)

Sometimes pop-ups should be allowed, as they open login window, or an address book for a webmail system. It is achieved by adding the site to the whitelist. Pop-ups from the sites in whitelist will not be blocked.

To use the whitelist you need to add the following commands in between <COMMANDS> </COMMANDS>:

```
<ALLOWPOPUPS name="popupAllow" />
```

This command tells that the command named "popupAllow" will be used to add the currently visited website to the white list.

You can associate popupAllow with and menu item or button:

```
<BUTTON caption="Allow Popups for this site" captionp="pop-ups are allowed for this site" hint="" id="tb_btn_V" img="83" imgp="84" command="popupAllow" />
```

When user clicks on that button the pop-ups will be allowed for the current site and the site will be added to the white list. If the site is already in the white list clicking on that button will remove it. When visiting a site that is in a whitelist the button associated with popupAllow will be displayed as pressed.

You can specify the sites that need to be in the whitelist by default. This is achieved by using the below lines:

```
<ALLOWPOPUPS name="popupAllow">
  <SITE>www.mysite.com</SITE>
  <SITE>webmail.mysite.com</SITE>
  <SITE>www.webmail.mysite.com</SITE>
</ALLOWPOPUPS>
```

NOTE: Files on a local hard drive and sites in the local area network are always considered to be in a whitelist. Plus, pop-ups evoked from the toolbar itself are never blocked.

<COMMANDCHUNK> command to execute several commands at once

Sometimes it is necessary to perform more than one command at once. For example, if you'd like to bind all browser-cleaning commands to a single button called "Clear ALL". To do this, you need to group all the commands inside a <COMMANDCHUNK> and then call this command.

```
<COMMANDCHUNK name="clean_browser">
  <EXEC command="clearhistory" />
  <EXEC command="cleariehistory" />
  <EXEC command="clearcookies" />
  <EXEC command="clearautofill" />
  <EXEC command="clearcache" />
</COMMANDCHUNK>

<BUTTON id="btn_clear" caption="Clear All" command="clean_browser" />
```

<SHELLEXECUTE> command

This command is used to launch all kinds of external applications. The command attribute specifies file name of an .exe file to launch. The options attribute can be used to pass options to it. If launch fails, a message box will open and display text specified in the not_found attribute.

```
<SHELLEXECUTE name="Prog" command="progrname.exe" options="/s %combol" not_found="Can't open Prog application..." />
```

<SETTINGS> section

<SETTINGS> section contains all the configuration details including URL's used for the toolbar update, install and uninstall. It also contains messages tests displayed by the toolbar (change them to localize the toolbar), default settings for the toolbar and item definitions for Options.html page. <SETTINGS> section usually looks like this:

```

<SETTINGS scope="10" regkey="YourCompany\\ToolbarNavigator">

  <MESSAGE id="corruptedMsg" default="One of the XML files is corrupted or invalid. Press
  OK to uninstall."/>
  <MESSAGE id="uninstallMsg" default="This will remove the Toolbar from your computer! Are
  you sure?"/>
  <MESSAGE id="updateMsg" default="This will try to update the Toolbar from the server.
  Continue?"/>
  <MESSAGE id="autoUpdateMsg" default="New version of Toolbar is available. Would you like
  to download and install new version?"/>
  <MESSAGE id="connectionError" default="Can't establish a connection."/>
  <MESSAGE id="lastVersionMsg" default="You have the latest version of the Toolbar."/>
  <MESSAGE id="contextMenuItemName" default="Toolbar search"/>
  <MESSAGE id="closeAllWindowsForUpdate" default="All running IE Windows will be closed
  before updating the Toolbar. Continue?"/>
  <MESSAGE id="UpdateError" default="Unable to update toolbar"/>
  <MESSAGE id="AlertMsg" default="Alert"/>
  <MESSAGE id="ErrorMsg" default="Error"/>
  <MESSAGE id="FindWord" default="Find next word in context"/>
  <MESSAGE id="closeAllWindowsForUninstall" default="Close all opened IE windows?"/>

  <URL id="firstURL"
  default="http://www.yourtoolbar.com/toolbar/toolbar.asp#how?toolbar_id=%toolbar_id"/>
  <URL id="serverpath" default="http://www.yourtoolbar.com/toolbar/" />
  <URL id="updateUrl" default="http://www.yourtoolbar.com/toolbar/toolbar.cab" />
  <URL id="urlAfterUpdate"
  default="http://www.yourtoolbar.com/toolbar/toolbar_update.asp?toolbar=update" />
  <URL id="urlAfterUninstall"
  default="http://www.yourtoolbar.com/toolbar/toolbar_update.asp?toolbar=uninstall" />
  <URL
  id="contextSearch" default="http://www.yourtoolbar.com/q_a/ga_search_results.asp?SearchType=All&am
  p;author=All&amp;page=1&amp;question=%combol" />

  <SIDESEARCH href="http://www.yoursearch.com/" />

  <CONFIGALLOW>www.yoursite.com</CONFIGALLOW>
  <CONFIGALLOW>www.sitename.com</CONFIGALLOW>

  <DRAGCURSOR cursor="somefile.cur"/>

  <USERAGENT name="additional str"/>

  <CHECKBOX id="OpenNew" default="0"/>
  <CHECKBOX id="AutoComplete" default="1"/>
  <CHECKBOX id="KeepHistory" default="1"/>
  <CHECKBOX id="RunSearchAutomatically" default="1"/>
  <CHECKBOX id="RunSearchDragAutomatically" default="1"/>
  <CHECKBOX id="DescriptiveText" default="1"/>
  <CHECKBOX id="ShowHighlightButton" default="1"/>
  <CHECKBOX id="ShowFindButtons" default="0"/>
  <CHECKBOX id="UpdateAutomatically" default="0"/>
  <CHECKBOX id="PopUpSound" default="1"/>
  <CHECKBOX id="PopUpCursor" default="1"/>
  <CHECKBOX id="DebugDisable" default="1"/>

  <COMBO id="EditWidthcombo1" default="1"/>

  <COMBO id="EditWidthcombo2" default="2"/>

  <RADIO name="EditWidthcombo1" default="1">
    <id>Widthcombo10</id>
    <id>Widthcomboll</id>
    <id>Widthcombo12</id>
  </RADIO>

  <RADIO name="EditWidthcombo2" default="2">
    <id>Widthcombo20</id>

```

```

        <id>Widthcombo21</id>
        <id>Widthcombo22</id>
    </RADIO>

    <FONT name="Tahoma" size="13"/>

    <HIGHLIGHT>
        <COLOR>F6FF00</COLOR>
        <COLOR>00FFE4</COLOR>
        <COLOR>5AFF00</COLOR>
        <COLOR>0087FF</COLOR>
        <COLOR>FFCC00</COLOR>
        <COLOR>FF00F0</COLOR>
    </HIGHLIGHT>

    <COLOR_SCHEMA>

        <!-- Toolbar skin image -->
        <TOOLBAR_SKIN></TOOLBAR_SKIN>

        <!-- Toolbar color -->
        <TOOLBAR_FACE>235,233,217</TOOLBAR_FACE>

        <!-- Menu background color -->
        <MENU>235,233,217</MENU>

        <!-- Selected menu background color -->
        <SELECTED_MENU_ITEM>170, 0, 0</SELECTED_MENU_ITEM>

        <!-- Text color -->
        <TEXT></TEXT>

        <!-- Text of item(s) selected in a menu -->
        <HIGHLIGHT_TEXT></HIGHLIGHT_TEXT>

        <!-- Grayed (disabled) text in a menu -->
        <GRAY_TEXT></GRAY_TEXT>

        <!-- Highlight color for three-dimensional display elements (for edges facing the
light source.) -->
        <HIGHLIGHT3D></HIGHLIGHT3D>

        <!-- Shadow for three-dimensional display elements. -->
        <SHADOW3D></SHADOW3D>

    </COLOR_SCHEMA>

    <EXTERNAL_SEARCH target="combol"
engine="http://www.yourtoolbar.com/q_a/qa_search_results.asp" param="question="/>
    <EXTERNAL_SEARCH target="combol"
engine="http://www.yourtoolbar.com/research/rr_search_results.asp" param="SearchCriteria="/>
    <EXTERNAL_SEARCH target="combol"
engine="http://www.yourtoolbar.com/articles/articles_search_results.asp"
param="SearchCriteria="/>
    <EXTERNAL_SEARCH target="combol" engine="http://www.google.com/search" param="q="/>
    <EXTERNAL_SEARCH target="combol" engine="http://search.microsoft.com/default.asp"
param="qu="/>

</SETTINGS>

```

The firstURL definition is required since it is used to display the page right after installation. All other settings are optional and you can omit them.

The <SETTINGS> tag has two attributes: scope and regkey.

The attribute scope defines a time-out interval (in hours) which the toolbar uses to check for updates when it works in auto-update mode (see below).

The optional regkey attribute specifies a registry key to store toolbar configuration in the registry.

The first few items in between <SETTINGS> and </SETTINGS> are <MESSAGE/> tags. Those tags are used to define the message texts the toolbar uses. Change them to localize your toolbar.

The next few items are the URLs used for the toolbar update, auto-update and install/uninstall.

<URL id="firstURL" default="http://... "/> - REQUIRED. this contains the URL of the page that is shown right after user have installed the toolbar. You can put any URL you like (it can be your "member center" page, "thank you" page or just entry page of your website).

<URL id="serverpath" default="http://... /toolbarinstfolder"/> - this has to contain the path to the folder where the toolbar installation files are stored. This folder is used to store .cab file with all the contents of the toolbar package. It is necessary that version.txt file is located in that folder also.

<URL id="updateUrl" default=" http://... /toolbarinstfolder/toolbar.cab"/> - this URL is used to download the newer toolbar package when the customer chooses an "update toolbar" option. The update will only happen if the version.txt on the server contains a version number greater than the one that is already installed.

<URL id="urlAfterUpdate" default=" http://... /afterupdate.html"/> - this page is shown after successful update of the toolbar.

<URL id="urlAfterUninstall" default=" http://... /afteruninstall.html"/> - this page is shown after uninstalling of the toolbar.

<URL id="contextSearch" default="http://...?q=%combo1"/> - this URL is used to search selected text and links from the current HTML document via IE context menu (right-click search).

The <CONFIGALLOW></CONFIGALLOW> tags are used to restrict the sites that are allowed to access the toolbar via javascript. This protects your toolbar properties from unauthorized access and modification.

<SIDESEARCH> tag allows to redefine the URL that is opened in the sidebar search. And you can redefine it to open your site instead of the standard IE search panel.

<DRAGCURSOR> allows you to change shape of the mouse pointer when the drag-and-drop operation is performed. The cursor attribute name of a cursor image.

<USERAGENT> appends a custom text to the USER_AGENT string that is reported to web servers as a part of any HTTP GET/POST request the browser sends. This line will be stored in web server log files and thus you can track who is using your toolbar and who do not. Adding a custom content (like your website name) you can easily identify who is using your toolbar through the weblogs.

The next few lines contain default values for the items that are shown on the user "options page". The default values could be adjusted to make the options default to on or off.

<CHECKBOX id="OpenNew" default="0"/> - Open a new browser window each time the user clicks search? (0-no, 1 -yes)

<CHECKBOX id="AutoComplete" default="1"/> - Use the auto-completion feature of the search box (it suggests an afore typed search request if it's beginning matches with what is typed into the search box). (0-no, 1 -yes)

<CHECKBOX id="KeepHistory" default="1"/> - Keep the history of the searches? (0-no, 1 -yes)

<CHECKBOX id="RunSearchAutomatically" default="1"/> - Execute the search automatically after a text string was picked from the history? (0-no, 1 -yes)

<CHECKBOX id="RunSearchDragAutomatically" default="1"/> - Execute the search automatically after "drag-n-drop" into search box? (0-no, 1 -yes)

<CHECKBOX id="DescriptiveText" default="1"/> - Show only icons in toolbar (=0) or show the full text descriptions of the buttons (=1).

<CHECKBOX id="ShowHighlightButton" default="1"/> - The highlight feature is turned on if that value is 1 and it is off when 0.

<CHECKBOX id="ShowFindButtons" default="0"/> - Word find feature is turned on if 1 and off if that is 0.

<CHECKBOX id="UpdateAutomatically" default="0"/> - Perform auto-update automatically each time the browser is open? (0-no, 1 - ask user before updating, 2 – update silently).

<CHECKBOX id="PopUpSound" default="1"/> - Enable playing of sound when a popup is blocked.

<CHECKBOX id="PopUpCursor" default="1"/> - Enable effect of temporary mouse cursor change when a popup is blocked.

```
<COMBO id="EditWidthcombo1" default="1"/>
<COMBO id="EditWidthcombo2" default="2"/>
```

- Default widths for combo boxes. The "default" number is an index of <WIDTH> tag from <COMBO> definition. In general Id has to be defined as the following pattern:
EditWidth<combo_box_name>.

```
<RADIO name="EditWidthcombo1" default="1">
  <id>Widthcombo10</id>
  <id>Widthcombo11</id>
  <id>Widthcombo12</id>
</RADIO>
<RADIO name="EditWidthcombo2" default="2">
  <id>Widthcombo20</id>
  <id>Widthcombo21</id>
  <id>Widthcombo22</id>
</RADIO>
```

Several different widths are supported for edit box on the user options page. In general Name has to be defined as the following pattern:
Width<combo_box_name><width_index>.

The next few lines are used to customize the appearance/colors used in buttons and menus.

 - specifies what font will be used for text captions and menu items.

Subsection:

```
<HIGHLIGHT>
  <COLOR>F6FF00</COLOR>
  <COLOR>00FFE4</COLOR>
  <COLOR>5AFF00</COLOR>
  <COLOR>0087FF</COLOR>
  <COLOR>FFCC00</COLOR>
  <COLOR>FF00F0</COLOR>
</HIGHLIGHT>
```

defines the colors used for highlighting search keywords inside the document.

The below section is optional and it defines colors and fonts to be used.

```
<COLOR_SCHEMA>
  <!-- Toolbar skin image -->
  <TOOLBAR_SKIN>skin.bmp</TOOLBAR_SKIN>

  <!-- Toolbar color -->
  <TOOLBAR_FACE>235,233,217</TOOLBAR_FACE>

  <!-- Menu background color -->
  <MENU>235,233,217</MENU>

  <!-- Selected menu background color -->
  <SELECTED_MENU_ITEM>170,0,0</SELECTED_MENU_ITEM>

  <!-- Text color -->
  <TEXT></TEXT>
```

```

<!-- Text of item(s) selected in a menu -->
<HIGHLIGHT_TEXT></HIGHLIGHT_TEXT>

<!-- Grayed (disabled) text in a menu -->
<GRAY_TEXT></GRAY_TEXT>

<!-- Highlight color for three-dimensional display elements
(for edges facing the light source.) -->
<HIGHLIGHT3D></HIGHLIGHT3D>

<!-- Shadow for three-dimensional display elements. -->
<SHADOW3D></SHADOW3D>

</COLOR_SCHEMA>

```

Here you can define background color that the toolbar uses, skin for the toolbar, and background image for the toolbar and foreground color for the toolbar. The windows bitmap (.bmp) files for skin or background of the toolbar can have arbitrary dimensions. If you do not define the colors or simply remove the section `<COLOR_SCHEMA></COLOR_SCHEMA>` from the configuration file the default windows colors will be used for the toolbar appearance.

The colors are defined in RGB format so light red is "255,0,0" and green is "0,255,0" and so on.

There is one additional option to for webdevelopers. Currently the pop-up blocker disables all Javascript error messages to be displayed when the pop-up blocker is on. This is required cause a lot of websites use Javascript to communicate with a pop-up window and since it is blocked the Javascript errors will be seen. But you can use the following inside the `<SETTINGS>` to allow the Javascript errors to be displayed regardless of the pop-up blocker on or off.

```
<CHECKBOX id="DebugDisable" default="0"/>
```

Setting background image And colors for the toolbar

In the `<SETTINGS></SETTINGS>` section of the configuration files please find the sub-section `<COLOR_SCHEMA></COLOR_SCHEMA>`. The colors are defined as RGB triples so light red is "255,0,0" and green is "0,255,0" and so on. The following can be defined:

```

<COLOR_SCHEMA>
  <!-- Toolbar skin image -->
  <TOOLBAR_SKIN></TOOLBAR_SKIN>

  <!-- Toolbar color -->
  <TOOLBAR_FACE></TOOLBAR_FACE>

  <!-- Menu background color -->
  <MENU></MENU>

  <!-- Selected menu background color -->
  <SELECTED_MENU_ITEM></SELECTED_MENU_ITEM>

  <!-- Text color in menu items -->
  <TEXT></TEXT>

  <!-- Text of item(s) selected in a menu -->
  <HIGHLIGHT_TEXT></HIGHLIGHT_TEXT>

  <!-- Grayed (disabled) text in a menu -->
  <GRAY_TEXT></GRAY_TEXT>

  <!-- Highlight color for three-dimensional display elements (for
edges facing the light source.) -->
  <HIGHLIGHT3D></HIGHLIGHT3D>

  <!-- Shadow for three-dimensional display elements. -->
  <SHADOW3D></SHADOW3D>

</COLOR_SCHEMA>

```

Setting the "skin" for the browser

You can change the skin for the browser i.e. a background image for all of the browser menus and toolbars like this:



To do this you have to use `<TOOLBAR_SKIN>skin.bmp</TOOLBAR_SKIN>` tag that has to be included into the configuration file in between `<COLOR_SCHEMA>` and `</COLOR_SCHEMA>` tags. The file has to be windows bitmap file (.bmp). Dimensions of the image can be arbitrary.

Manual toolbar update

There is `<UPDATE>` command defined for the toolbar. You can associate it with any button or menu item and when clicked it will try to update the toolbar from your server. When the update is started the toolbar downloads version.txt file from your server. This file has to be located in the folder identified by "serverpath" setting.

So that when you have:

```
<URL id="serverpath" default="http://yoursite.com/toolbar/">
```

It will download the file <http://yoursite.com/toolbar/version.txt>

After version.txt file was downloaded the version number gets extracted and if that version number is greater then the current toolbar version update will be done. The update is done by downloading and installing new .CAB file from your server. This new .CAB file is got from the URL specified in updateUrl setting.

```
<URL id="updateUrl" default="http://www.yoursite.com/toolbar/toolbar.cab"/>
```

This URL has to point to .CAB file. After successful update the user's browser is redirected to urlAfterUpdate page (also configurable in the SETTINGS section).

Automatic toolbar update

Toolbar can be updated manually or automatically. The automatic update will work only if the UpdateAutomatically setting is set to non zero value.

```
<RADIO id="UpdateAutomatically" default="1"/>
```

The frequency of automatic updates is controlled by scope="" attribute of the SETTINGS tag. This attribute defines time interval (in hours) between auto-update attempts. scope="1" tells the toolbar to check for the updates each hour. Please set it to 168 to perform the check for updates once a week or to 24 to check once a day. If this attribute is set to zero or omitted, the automatic update will not work.

When the automatic update is triggered, the toolbar downloads version.txt file from your server. This file has to be located in the folder identified by "serverpath" setting.

So that when you have:

```
<URL id="serverpath" default="http://yoursite.com/toolbar/">
```

It will download the file <http://yoursite.com/toolbar/version.txt>

After version.txt file was downloaded the version number gets extracted and if that version number is greater then the current toolbar version update will be done. The update is done by downloading and installing new .CAB file from your server. This new .CAB file is got from the URL specified in updateUrl setting.

```
<URL id="updateUrl" default="http://www.yoursite.com/toolbar/toolbar.cab"/>
```

This URL has to point to .CAB file. After successful update the user's browser is redirected to urlAfterUpdate page (also configurable in the SETTINGS section).

You can control if it should prompt for updates:

```
<RADIO id="UpdateAutomatically" default="1"/>
```

Or will update silently:

```
<RADIO id="UpdateAutomatically" default="2"/>
```

Disabling automatic updates

You can disable automatic update. In this case the toolbar will only be updated UPDATE command triggered by clicking on appropriate button. In the SETTINGS section you should set UpdateAutomatically to 0:

```
<RADIO id="UpdateAutomatically" default="0"/>
```

See also the description of the options page.

Options page

The options page is just an HTML page. You can use any formatting and decorations that you can use in any other HTML file. The only special thing is the control elements (checkboxes, comboboxes etc) that are used to control toolbar's behaviour. They shall have the same id as the options are called in the <SETTINGS> section of toolbar's XML.

When this page is loaded, the toolbar will mark these options to reflect it's current settings. When user changes these options, the toolbar will immediately change itself accordingly.

We recommend you to use the example options.html file and only change the formatting.

If you delete an option from the HTML, the user will have no means to change the default setting specified in the <SETTINGS> section of the toolbar XML file.

Options supported on the 'user options' page and using Custom XML functionality

The following options are supported on the standard user options page:

- § Open a new window to display results each time you search
- § Auto Complete
- § Keep a search history in a drop-down list under the search box
- § Automatically run a search when you select from the search history
- § Run search automatically when users drags and drops text into the search box
- § Update toolbar automatically
- § Define what buttons to show on the toolbar

If you do not wish to allow your user to setup these options you can simple remove the link to the options page from the toolbar menu. If you wish to allow your users to adjust only sub-set of the above options you can customize options.html page that is distributed with the toolbar.

E.g. we have following menu in the toolbar:

```
<BUTTON id="some_menu_button" caption=" Some menu">
  <MENU id="menu_id" type="Single">
    <ITEM id="some_submenu_1" caption=" Some submenu 1" command="redirect"
href="http://www.somesite_1.com"/>
    <ITEM id="some_submenu_2" caption=" Some submenu 2" command="redirect"
href="http://www.somesite_2.com"/>
    <ITEM id="some_submenu_3" caption=" Some submenu 3" command="redirect"
href="http://www.somesite_3.com"/>
  </MENU>
</BUTTON>
```

To show or hide these toolbar buttons or menu items we should have in the options.html:

```
<input type="checkbox" id=some_menu_button> Show "Some menu"
<input type="checkbox" id=some_submenu_1> Show "Some item 1"
<input type="checkbox" id=some_submenu_2> Show "Some item 2"
<input type="checkbox" id=some_submenu_3> Show "Some item 3"
```

Please note that checkbox 'id' in the options.html must be the same as toolbar element 'id'.

The options.html file can be located on a web server, instead of local disk. Please use WEBJUMP with parse_events="1" in that case.

You can also utilize <CONFIGALLOW></CONFIGALLOW> tags to let all pages on specified sites change options. When you have at least one domain name between the <CONFIGALLOW></CONFIGALLOW> tags toolbar security mode turning on. If options.html located on the another domain and you have parse_events="0" you will not be able to change the toolbar options.

If you want to enlarge user customization options you should use property of <INCLUDE_CUSTOM_XML> tag. Using this tag you can insert or remove any toolbar element with any functionality which is defined by <INCLUDE_CUSTOM_XML> tag. An example of using this tag you can find on page 24.

Toolbar scripting – browsing automation and extension via toolbar

An HTML page that is currently opened in the browser window can be accessed from the toolbar via the special object that is created during initialization of the toolbar. You'll need to create a JavaScript function in the HTML page that is loaded into your <BANNER> or <BUBBLE> to catch this event and create the object.

```
var IExplorer;

// This function will be called after a page is loaded into the browser
function DocumentComplete(tool)
{
    IExplorer=tool.explorer;
}

```

After that you can address an HTML page opened in the browser. You can change colors on the page, highlight specific words, make the page analysis and many other useful tricks. The below example will change the background color of the page.

```
IExplorer.body.style.backgroundColor="#ff0000";
```

But if your HTML contains frames you should use frame property. Here is the sample code:

```
{
MyTool=tool;
if(MyTool.frame) //check if the page already loaded
{

```

```
for(i=0;i<MyTool.frame.toArray().length;i++) //for all frames on the page
{
MyTool.frame.toArray()[i].body.style.background="#ff00ff";//this demo set frames
background to the red
}
}
}
```

Using affiliate capabilities

The basic idea of the affiliate support is to provide each affiliate with it's own distribution package with their own unique affiliate identifier that could be tracked and used in affiliate programs. To support affiliate capabilities the toolbar has a special %AffiliateID variable. To get the values of this variable the toolbar reads the first line of the affid.dat file and puts it's contents into the %AffiliateID. You can use this %AffiliateID in the URLs to include XMLs or banners customized for the affiliate or just to report this back to the server what affiliate had provided the distribution.

```
<BANNER width="200" url="http://www.yourtoolbar.com/banner.php?affiliate=%AffiliateID"
id="affbanner"/>
```

FAQ – Frequently asked questions

How can I use my own images for buttons?

When selecting icons for buttons it seems that we can only select from a list of predefined icons. Is it possible to use our own icons and what is needed to accomplish that?

Yes, you can use any icons for your toolbar if you change the nav.bmp file or replace it with yours.

Can we have different languages for toolbar button text and menu text?

Yes two-byte (UTF characters) sets are fully supported. In addition to Spanish, German, French, Portuguese, Italian as others, the toolbar supports double byte languages, such as Korean, Chinese and Japanese. Please refer to the CHANGELAYOUT command description on how to switch the languages on the fly.

Is it possible to change toolbar language 'on the fly' without restarting the IE?

From the toolbar it is possible you can implement different .XML files and switch between them when the user presses a button on the toolbar. Please refer to the CHANGELAYOUT command description.

How can I organize news or advertising via the toolbar?

The simple way: just include a <BANNER> tag in your toolbar and redirect it to an HTML page, which will refresh itself periodically.

```
<?xml version="1.0"?>
<TOOLBAR name="IE Toolbar Sample" icons="icons.bmp" hot_icons="icons.bmp"
dllname="toolbar">

  <!-- News banner (HTML approach) -->
  <BANNER caption="news" href="http://www.yoursite.com/toolbar_news.html" expire="10"
width="200"/>

  <!-- News include (XML approach) -->
  <INCLUDE_XML filename="http://www.yoursite.com/toolbar.asp" expire="10"/>

</TOOLBAR>
```

Another way: Use <INCLUDE_XML> tag with a server side XML file.

Included XML file (placed at URL <http://www.yoursite.com/toolbar.asp>):

```
<?xml version="1.0"?>
<TOOLBAR>

<%
                                ` ASP script (generates XML for toolbar)
Randomize
MyValue = Int((4 * Rnd()) + 1)      ` Generate a random number for advertisement
advText = "Advertisement #" & MyValue ` Image name
%>

  <BUTTON href="http://www.yoursite.com/advert.asp?adv=<%=MyValue%>"
command="redirect" hint="" caption="<%=advText%>" />

</TOOLBAR>
```

How can I refresh the mini web page in the banner periodically?

You should use the expire attribute of the BANNER tag to specify a time interval at which the banner shall be reloaded.

```
<BANNER caption="news" href="http://www.yoursite.com/toolbar_news.html" width="200"
expire="1"/>
```

Additionally, you can use the sync attribute to force reloads when user jumps from page to page. It could be set to one of two values:

BeforeNavigate – reloads banner when user clicks on a link, or enters URL manually.

OnDocumentComplete – reloads banner after the page have been loaded completely by the browser.

```
<BANNER caption="news" href="http://www.yoursite.com/toolbar_news.html" width="200"
expire="1" sync="OnDocumentComplete" />
```

How can I have news, short jokes or ads scroll across the toolbar?

Use the <BANNER>. The below will create a 200 pixel wide HTML banner inside the toolbar that is downloaded from your site (jokes.html).

```
<BANNER id="Jokebox" caption="Jokes" url="http://www.yoursite.com/jokes.html"
width="200"/>
```

Please see an example jokes.html below:

```
<html>
<head>
  <META HTTP-EQUIV="PRAGMA" CONTENT="NO-CACHE">
  <META HTTP-EQUIV="Cache-control" CONTENT="NO-CACHE, must-revalidate">
  <style>
    a.ticker { color:#FFFFFF; font-weight:bold; height:10px;
filter:progid:DXImageTransform.Microsoft.dropshadow(OffX=1, OffY=1, Color='#666666',
Positive='true')}
  </style>
  <script language="javascript">
    started = true;
  </script>
</head>
<body bgcolor="#D5D2CD" leftMargin=0 topMargin=0 marginWidth=0 marginHeight=0>

  <marquee scrollamount=3 direction=left onMouseOver="if (started) { this.stop() }"
onMouseOut="if (started) {
  this.start() }" onClick="if (started) {started=false; this.stop();} else {started=true;
this.start();}">
    <table cellspacing=0 cellpadding=0 border=0>
      <tr>

        <!-- TICKER TEXT 1 -->
        <td width=12></td>
        <td width=200><a href=http://www.yoursite.com/jokes1.html class="ticker">A
funny joke</a></td>

        <!-- TICKER TEXT 2 -->
        <td width=12></td>
        <td width=200><a href=http://www.yoursite.com/jokes2.html class="ticker">A
very funny joke</a></td>

        <!-- TICKER TEXT 3 -->
        <td width=12></td>
        <td width=200><a href=http://www.yoursite.com/jokes3.html
class="ticker">Another funny joke</a></td>

        <!-- TICKER TEXT 4 -->
        <td width=12></td>
        <td width=200><a href=http://www.yoursite.com/jokes4.html class="ticker">And
yet one more funny joke</a></td>
      </tr>
    </table>
  </marquee>

</body>
</html>
```

The jokes.html can also be a script like jokes.php or jokes.asp.

Is there a way to have the toolbar send the 'OnDocumentComplete' request to our server only if the user is viewing a URL that starts with http://

If you do not want the toolbar to send a request to when the url is like https://, ftp://, or a local drive C:\, D:\, etc, please use the attribute called urltemplate for INCLUDE_XML tag:

```
<INCLUDE_XML filename=http://www.softomate.net/tbuilder/custom/elancer/get\_toolbar.php
sync="OnDocumentComplete" urltemplate="http://"/>
```

How can I implement pagerank or URL information in the toolbar?

Toolbar gives many possibilities for implementing such server side processing as page ranking (similar to the Google PageRank), keyword analysis and associated keyword information. To implement this you'll need to develop server side scripts. The below example demonstrates how to achieve functionality similar to Google PageRank with your toolbar.

Example:

```
<?xml version="1.0"?>
<TOOLBAR name="IE Toolbar Sample" icons="icons.bmp" hot_icons="icons.bmp"
dllname="toolbar">
...
<INCLUDE_XML
filename="http://www.yoursite.com/getrank.asp?toolbar\_id=%toolbar\_id&URL=%url"
sync="OnDocumentComplete"/>
...
</TOOLBAR>
```

Toolbar will download the XML file generated by getrank.asp page every time the user navigates to a new page with his browser. By feeding back the appropriate XML you can give the user additional information about the page he currently visits. You can also change the appearance of the toolbar, put new buttons, menus, banners displaying (as Alexa.com toolbar does).

Similarly to Alexa.com you can create a drop-down html menu that will display the detailed information about the current domain, url etc (of course you need to provide server side CGI, ASP or PHP scripts that will generate the HTML page bubble.asp in the example below)

```
<BUTTON id="bubble2" caption="URL info" img="1">
<BUBBLE href="http://www.yoursite.com/bubble.asp?url=%url" width="100" height="200" />
</BUTTON>
```

Does the toolbar allow users to customize their own toolbar?

Yes this feature is supported in the toolbar. For example, you can offer a menu buttons, and users can choose which ones to make available on their toolbar. To control the visibility of individual buttons options.html page can be used. To disable some buttons by default (so they will not be visible on the toolbar start and can only be made visible from options.html, please add the attribute visibility="0" to the button definition like below:

```
<BUTTON id="any_id" caption="any_caption" img="7" hint="any_hint" command="any_command"
visibility="0"/>
```

How can I provide more toolbar customization for users except of options.html properties?

You can provide full toolbar customization using <INCLUDE_CUSTOM_XML> tag properties with Java Script page. It allows your users to implement own buttons/menus and other

toolbar elements from the specified web or local html page. Please check for samples placed at the Toolbar Studio folder ...\\projects\\samples. There are 2 samples showing how the user can customize menu with submenus in the toolbar ('cust_menu.cab') and how the user can implement own buttons to the toolbar ('cust_buttons.cab').

How will the INCLUDE_XML feature behave when users go offline?

Our toolbar uses cache to store the retrieved .XML files. And if for whatever reason the connection fails it will use cached .XML file. You can turn caching off using nocache="1" attribute of INCLUDE_XML. If no cached version exists the .XML file specified by local= attribute of the INLCUDE_XML tag will be used.

How do I release a new version of the toolbar to my clients?

First you need to change the version number. Please provide increasing numbers fore this: like if you had 1.0 you should use 1.1, 1.2 ... or 2.0, 3.0, 3.1 ...

As result of toolbar creation, you will have a webinstall folder with several files. You have to upload it to your website and provide a link for your users to download it.

When the users clicks on "update" button in his toolbar and you made a new version this new version will be downloaded and installed from your website. If the toolbar has auto-update feature enabled user's toolbars will be updated automatically.

How do I know if the update feature is working?

Normally you need to verify that your serverpath and updateurl inside the <SETTINGS> </SETTINGS> are correctly configured like below:

```
<URL id="serverpath" default="http://yoursite.com/toolbar/" />
<URL id="updateUrl" default="http://yoursite.com/toolbar/toolbar.cab" />
```

Please make sure that they point to existent folder on your website and the toolbar.cab file is there. Make sure that the version.txt file is there. It should be accessible as <http://yoursite.com/toolbar/version.txt>

The toolbar will upgrade itself either manually (when UPDATE command is triggered by button or menu item) or automatically (see automtic update).

It will only update if the version.txt file on your server has greater version number then the existent.

Does it do update automatically or will it prompt me?

It will prompt for updates if you use:

```
<RADIO id="UpdateAutomatically" default="1" />
```

Or will update silently if you have:

```
<RADIO id="UpdateAutomatically" default="2" />
```

Or will update only when user clicks update.

```
<RADIO id="UpdateAutomatically" default="0" />
```

How does it know in general to update?

When automatic updates are turned on it pulls version.txt file from the server each X hours (where X is defined using the scope attribute of the SETTINGS tag). And if it finds that the version number has changed it performs an upgrade.

Why do we need to sign this cab file?

The .cab files are signed for security reasons. Unless Internet Explorer security level (available at Internet Options menu) is set to LOW, Internet Explorer will not install an unsigned .cab file.

For security purposes, you must register the toolbar's CAB file to make sure it will be accepted by browsers with a confidentiality level.

You may obtain a Code Signing Certificate by contacting an authorized organization such as Verisign (www.verisign.com) and Thawte (www.thawte.com).

Once registered, you will receive two files:

A certificate (.spc file). The certificate informs users that the software is secure.

An official registering key (.pvk file). The registering key is used to lock the software. During the installation, users need to accept to install the key on their desktop in order to be able to install the software.

Pricing for a certificate application vary from one company to another. Upon request, your key should be sent to you in approximately two days.

The Code Signing Certificate guarantees users that the software does originate from you and that the software is free of alteration or corruption. It is then safe for users to install it.

We also can sign your .CAB file with our own certificate.

NOTE: When installing a toolbar signed with a certificate, users need to accept the digital signature.

How can I make a digital sign for the toolbar?

After you purchase the code signing certificate from Verisign.com or Thawte.com, they will send you the email with instruction for how to use the certificate. Following their instruction, you will download two files:

mycredentials.spc

myprivatekey.pvk

To make the .cab signed you need to run the following commands:

```
signcode -n "name of product" -i "Additional info(usually URL)" -spc mycredentials.spc -v myprivatekey.pvk -t http://timestamp.verisign.com/scripts/timestamp.dll toolbar.cab
```

How can I obtain a certificate to sign the toolbar with?

We can offer you 3 options for digital certificate.

- 1) You can purchase the certificate from THAWTE.com and use it at your website. You need to order 'code signing certificate' it costs \$199 per year. This certificate will be issued on your own business name and will contain it inside. or You can purchase the certificate from Verisign. According to Verisign (<http://www.verisign.com/products/signing/code/>), the certificate name is Microsoft Authenticode Digital ID: In conjunction with Microsoft's Authenticode technology, this enables you to digitally sign 32-bit .exe (PE files), .cab, .dll and .ocx, files.
- 2) We can sign the toolbar with SOFTOMATE.COM (our company) certificate for \$20.
- 3) .EXE installer (no digital certificate is required). You can use the Cab2NSIS utility from our site <http://www.besttoolbars.net/download.php> to convert .cab into setup.exe application. This setup.exe once downloaded and executed will install the toolbar. To use cab2NSIS: Unzip cab2NSIS.zip archive into a folder where your toolbar.cab file is and run cab2NSIS.bat. You'll get the self extracting archive called toolbar.exe. Upload it to your website and give your customers a link to download it.

How can I sign the toolbar with the Softomate's certificate?

Signing with our certificate is the cheapest way to have your toolbar signed. Signing with our (SOFTOMATE) certificate works as follows:

1. You send us your .cab file.
2. We analyze if it is ok.
3. We sign it with our certificate (issued on Softomate/BestToolbars)
4. We send you .CAB file back.

The whole procedure takes about one day. You can order signing on our website.

I would like to know how can we change the test certificate to our company name.

You can use test certificates to sign your toolbar. The test certificate will display a warning to your users. You can download test certificate signing utility from our website at:

<http://www.besttoolbars.net/download.php>

Please take a look over sign_code.bat inside the signing.zip archive you'll find the following line:

```
makecert -sv test.pvk test.cer
```

Please change it to:

```
makecert /sv "test.pvk" /n "CN=YOUR COMPANY NAME" test.cer
```

Do I need to sign the .cab file that is used for updates?

You do not need to sign the .CAB file that is used for the update functionality. The toolbar will download this .CAB and unpack transparently for the user.

Is it possible to change the default install directory in the .exe installer?

Yes that is possible. You need to get into Toolbar Studio install directory [e.g. c:/Program Files/Softomate/ToolbarStudio/] and edit templ.txt file in the folder .../ToolbarStudio/bin/cab2nsis/. In particular you need to change the line:

```
!define ZIP2EXE_INSTALLDIR `$_PROGRAMFILES\IEToolbar' to e.g.  
!define ZIP2EXE_INSTALLDIR `$_PROGRAMFILES\YourToolbarName'
```

While you are there, you can also change name of the software being installed. It is defined in a following line:

```
!define ZIP2EXE_NAME `Toolbar`
```

Is there any ways to add or edit something in the installer? I want to add "Terms of use" of the toolbar, and let users choose to "Accept" or "Do not Accept" before they continue installation.

Yes that is possible using CAB2NSIS utility we have. You'll find a couple of .nsh files right after you've unzipped cab2nsis. You can modify those .NSH files as it is explained here: <http://nsis.sourceforge.net/home/> to achieve what you require.

As an alternative (if you do not have a time to do this yourself), you can explain to us what exactly you are looking for. And we'll have one our support guy do this for you.

When reinstalling the toolbar it shows the error message: "could not extract the current file. The process cannot access the file because it is being used by another process."

Normally the toolbar.DLL file is placed into C:/Program Files/IEtoolbar/ folder. This file is being used (and locked) by Internet Explorer and cannot be replaced unless you're your browser or restart the computer.

The most simplistic way to install the toolbar is to provide different path during the installation. (When the message with C:/Program Files/IEtoolbar/ as path will come up) please enter something like: C:/Program Files/IEtoolbar_1/ and then it will work. You can also fully uninstall the toolbar from the Add/Remove software from Control panel.

What type of commands can I use with the "Shell command on the User PC"?

You can launch any programs (such as word.exe, notepad.exe) or execute any commands that are accessible from the Start->Run menu (like tracert and cmd).

How can I include a .DLL into my toolbar's .CAB and make this .DLL registered when installing my toolbar?

To achieve this, you should download the CABARC.exe (a part of CAB SDK) from Microsoft Website and use it to pack your DLL into. Please make also adjust .inf file to contain the definition for your .DLL there.

How can I include an .EXE into my toolbar's .CAB and make this .EXE file to be executed when someone presses a button or clicks menu item in my toolbar?

To achieve this, you should add the following lines to the <COMMANDS> section:

```
<LOCALHTML name="prog" href="progrname.exe"/>
<SHELLEXECUTE name="Prog" command="progrname.exe" options="/s %combol" not_found="Can't
open Prog application..."/>
```

Could you create a new GUID or CLSID for us? We do not want it to conflict with others.

Yes, the toolbar created always has unique GUID DLLs for you.

Do you use MFC or WTL for the toolbar? Will it require additional DLL's or downloads?

We use Visual C++, ATL and WTL. It does not require any additional DLL's to be downloaded. That is why our toolbar is only 180KB in size and very fast.

Opening a page in a new or modal browser window

To do this, define a new WEBJUMP command. The command has to be defined between <COMMANDS></COMMANDS> tags in the configuration file. The syntax is as follows:

```
<WEBJUMP name="newcommand1" href="http://www.somesite.com/somepage.html"
newbrowserwindow="true"/>

<WEBJUMP name="newcommand2" href="http://www.somesite.com/somepage.html"
newbrowserwindow="modaldialog"
options="status:no;help:no;dialogHeight:600px;dialogWidth:600px;dialogHide:yes;scroll:auto;" />
```

options parameter defines an options of the window and only valid for modal dialog window. It is the same as in javascript: window.open() function. This command can then be added to any button or menu item.

You can use the Javascript to open new window with specific settings. To do this you should use the following line:

```
<WEBJUMP name="newcommand3" href="javascript:var
wpr=window.open('http://www.somesite.com','chia','location,height=100,width=100')"
newbrowserwindow="false"/>
```

When clicking a link in an html-bubble, is it possible that the redirect is opened in the bubble itself instead of the main browser window?

Yes that is possible just add #inbanner to the end of your URL's inside HTML like the below:
<http://www.yoursite.com/index.html#inbanner>

Can I set up toolbar to rotate multiple banner HTMLs in the same space on toolbar?

You can use local HTML file inside BANNER and that local HTML file has to contain Javascript redirecting to different files.

Sending POST requests via the toolbar

To do this, define a new WEBJUMP command. The command has to be defined between <COMMANDS></COMMANDS> tags in the configuration file. The syntax is as following:

```
<WEBJUMP name="newcommand1" post="Var(1)=%combol&Var(2)=%domain"/>
```

I'm trying to edit the basis.xml file to contain a listbox. Clicking on each list item needs to redirect to a different site.

You can use the following code:

```
<COMBO id="se_search_option" name="se_search_option" hint="" limit="45" command="goSite">
<WIDTH>100</WIDTH>
<VALUE display="Site1">http://URL of site1</VALUE>
<VALUE display="Site2">http://URL of site2</VALUE>
</COMBO>
```

And the below WEBJUMP command:

```
<WEBJUMP name="goSite" href="%se_search_option"/>
```

How to use multiple search sites in the toolbar

If you need to search on multiple search sites like google.com and your own site with your own site being the default, define the following commands:

```
<WEBJUMP name="search1"
href="http://www.yourtoolbar.com/search.asp?q=%combol&Searchtype=from_toolbar"/>
<WEBJUMP name="search2" href="http://google.com/search?q=%combol"/>
```

In the above lines %combol symbol shows the position into which the search string will be substituted. "Combol" here is a name of the combo box, from which toolbar should get the search terms.

To specify that by default the search will be performed on your site you'll have to specify that the Search combo box uses the search1 command as shown in the fragment below:

```
<COMBO name="combol" caption="search" hint="enter text to search" command="search1"
limit="40" histmax="10">
<WIDTH>10</WIDTH>
<WIDTH>15</WIDTH>
<WIDTH>20</WIDTH>
</COMBO>
```

Then you can use the SWITCHCOMMAND command (see it's description for details):

```
<BUTTON id="swbtn" caption="MyCompaby" img="8" command="swtch"/>
<COMMANDS>
<WEBJUMP href="http://www.yoursite.com/search?q=%search" name="keMdXGRo"/>
<WEBJUMP href="http://www.anotheryoursite.com/?q=%search" name="redir2"/>
<SWITCHCOMMAND name="swtch" target="keMdXGRo" command="redir2"/>
</COMMANDS>
```

Disabling the down arrow shown beside buttons

You have to change the menu type from "Split" to "Single". So that it will not show the down arrow near the button.

```
<MENU img="logo.bmp" type="Single">
...
</MENU>
```

Providing news/information

You can insert the following lines:

```
<BANNER width="100" url="http://www.yourserver.com/news.html" expire="60"/>
```

That will insert a mini web browser window into the place. By uploading news to <http://www.yourserver.com/news.html> you can achieve that the users will see your news periodically while surfing. Please use `expire=` and `sync=` to define periodicity. You can insert any html code into news.html page so that you can provide scrolling lines, flashing items and so on.

Changing the icon used for "word-find" toolbar buttons

Word find buttons always use the icon number 1 from icons.bmp file. So if you wish to change this icon, just change the first icon.

How can I reset pop-up blocker counter?

There is a special dedicated command `<CLEARCOUNT>` designed for this purpose.

```
<COMMANDS>
<CLEARCOUNT name="clearcount"/>
</COMMANDS>
```

You can assign a menu item or button with this command.

```
<BUTTON id="bt_id" caption="Clear pop-up blocker cound" img="4" command="clearcount"/>
```

Is there an easy way to the pop-up blocker to work exactly as pop-up blocker in Google toolbar?

To achieve this, please do the following:

1) Add the following commands in between `<COMMANDS>` `</COMMANDS>`

```
<BLOCKPOPUPS name="blockPopups" default="1"/>
<ALLOWPOPUPS name="popupAllow"/>
```

The first tells that the pop-up blocking is on by default the second command tells that the command named "popupAllow" will be used to add the current site to the white list.

2) Please associate the menu item or button with this command like below:

```
<BUTTON caption="Allow Popups for this site" captionp="pop-ups are allowed for this site"
hint="" id="tb_btn_V" img="83" imgp="84" command="popupAllow"/>
```

When pressing on that button the pop-ups will be allowed for that site and the site itself will be added to the white list. If the site is already in the white list clicking on that button will remove it.

Also you can add some of the sites into the white list by default: (achieved using the below lines instead of `<ALLOWPOPUPS name="popupAllow"/>`)

```
<ALLOWPOPUPS name="popupAllow">
<SITE>aimexpress.aol.com</SITE>
<SITE>www.aimexpress.aol.com</SITE>
<SITE>www.aim.com</SITE>
<SITE>webmail.aol.com</SITE>
<SITE>www.webmail.aol.com</SITE>
</ALLOWPOPUPS>
```

How can I toggle display of images in the browser?

You can switch on/off display of images by using the ENABLEIMAGE command. To use it you should define it in the COMMANDS section and assing a button or menu item to it.

```
<COMMANDS>
    <ENABLEIMAGE name="imge" />
</COMMANDS>
<BUTTON id="btimages" caption="Show Images" command="imge"/>
```

How can I enable/disable flash animations in the browser?

You can switch on/off display of flash by using the ENABLFLASH command. To use it you should define it in the COMMANDS section and assing a button or menu item to it.

```
<COMMANDS>
    <ENABLEFLASH name="flena" />
</COMMANDS>
<BUTTON id="btflash" caption="Show Flash" command="flena"/>
```

How can I indicate pop-up blocking by changing the button icon?

There is a BUTTON attribute imgf, which sets the icon that will appear on the pop-up blocker button while pop-up window is blocked:

```
<BUTTON img="8" imgf="9" imgp="10" caption="Popups Allowed" captionp="#cnt# blocked"
id="tb_block" command="block"/>
```

How can I make some buttons or menu items disabled by default?

The BUTTON and ITEM tags have the visibility attribute. Setting visibility= to 0 makes a button or menu item invisible until it is enabled in the options page.

```
<BUTTON id="btclrct" caption="CLEARCOUNT" img="4" command="clearcount" visibility="0" />
```

How can I view the source code of the currently visited page by clicking one button?

You should associate the following JavaScript command for button command 'URL Redirection':

```
<BUTTON id="any_bnt_id" caption="View Source" img="4" command="redirect" visibility="1"
href="JavaScript: var hhh=window.location='view-source:' + location;"/>
```

I have some problem: when I try to run toolbar_builder.bat an error occurs.

Most likely, that is because something is wrong with your XML file. Please try to open it in your browser (just by double clicking on basis.xml) and your browser will point out the place in your XML that is wrong. Also you can use any FREE XML editor like the one in downloads section of our website to ensure that your .XML is valid.

Does your toolbar support https? Does it support server side PUSH operations?

Yes it supports https redirects and https calls in DYNAMIC mode - <INCLUDE_XML>. Server side push can only be simulated via explicitly calling .reload() method for the toolbar from Javascript. All those advanced customization techniques are explained in this manual.

What will happen if I set two or more buttons with the same id? Will this mean that the checkbox for this id will be controlling the button with the same id?

The id's have to be unique. But you can use the Javascript inside your options.html to link 2 checkboxes together (I mean clicking on one should also trigger another). You can even hide these checkboxes on html page but use Javascript to switch them on/off.

Does the toolbar include any types of spyware?

We do not contain any spyware components inside our software. They were never been a part of our programs and never will be.

What will be the cost of the extra feature set implementation?

We do custom implementation in our offshore development center. The rate is \$20 per man hour. Whenever the changes are needed you can ask us.

APPENDIX

Example basis.xml for a Google-like toolbar

```

<TOOLBAR icons="nav.bmp" hot_icons="nav.bmp" name="Google-like Toolbar"
dllname="toolbar">
  <BUTTON caption="" hint="My Logo" id="tb_btn_vFSMgLLx" img="" command="redirect"
href="http://www.google.com">
    <MENU type="Split" img="demo_logo.bmp" hotimg="demo_logo.bmp">
      <ITEM caption="Google Home Page" hint="Navigate to the Google home
page" img="" href="http://www.google.com" command="redirect"/>
      <ITEM caption="Google Links" hint="" img="">
        <ITEM caption="Advanced Search" hint="Navigate to the
Google Advanced Search page" img="" href="http://www.google.com/advanced_search"
command="redirect"/>
        <ITEM caption="Google Images" hint="Search the Web for
images" img="" href="http://www.google.com/imghp" command="redirect"/>
        <ITEM caption="Google Groups" hint="Browse or search within
Google Groups discussions" img="" href="http://www.google.com/grphp" command="redirect"/>
        <ITEM caption="Web Directory" hint="Browse or search within
Google Web Directory" img="" href="http://www.google.com/dirhp" command="redirect"/>
        <ITEM caption="Google News" hint="Navigate to the Google
News site" img="" href="http://news.google.com/" command="redirect"/>
        <SEPARATOR/>
        <ITEM caption="Options..." hint="Change Toolbar options"
img="" command="DiTNVvqa"/>
        <ITEM caption="Froogle" hint="Find products for sale"
img="" href="http://froogle.google.com/" command="redirect"/>
        <ITEM caption="Google Answers" hint="Post a question on
Google Answers" img="" href="http://answers.google.com/" command="redirect"/>
        <ITEM caption="Blogger.com" hint="Navigate to Blogger.com"
img="" href="http://new.blogger.com/" command="redirect"/>
        <ITEM caption="Zeitgeist" hint="Search patterns, trends and
surprises according to Google" img="" href="http://www.google.com/press/zeitgeist.html"
command="redirect"/>
        <SEPARATOR/>
        <ITEM caption="Search Preferences" hint="Navigate to the
Google language, display and filtering options page" img=""
href="http://www.google.com/preferences" command="redirect"/>
        <ITEM caption="Language Tools" hint="Navigate to the
Google's Language Tools page" img="" href="http://www.google.com/language_tools"
command="redirect"/>
        </ITEM>
        <SEPARATOR/>
        <ITEM caption="Clear Search History" hint="Clear the list of
previous searches from the Toolbar's search box" img="" command="clearhistory"/>
        <ITEM caption="Help" hint="Help" img="">
          <ITEM caption="Help" hint="Display documentation for the
Google Toolbar" img="" href="http://toolbar.google.com/help.html" command="redirect"/>
          <ITEM caption="Contact Us..." hint="Send Google your
feedback on the Google Toolbar" img="" href="http://toolbar.google.com/feedback.html"
command="redirect"/>
          <ITEM caption="Uninstall" hint="Remove the Toolbar from
your browser" img="" command="uninstall"/>
        </ITEM>
      </MENU>
    </BUTTON>
    <SEPARATOR/>
    <COMBO name="search" caption="" hint="Search Google" limit="40" histmax="10"
id="tb_cmb_SVCgVyWG" command="keMdXGRo">
      <WIDTH>100</WIDTH>
      <WIDTH>130</WIDTH>
      <WIDTH>150</WIDTH>
    </COMBO>
    <BUTTON caption="Search Web" hint="Search the Web" id="tb_btn_LKRIuoCj" img="93"
command="OGFnfNCz">
      <MENU type="Split" img="" hotimg="">
        <ITEM caption="Search Web" hint="" img="" command="pXyPVvtx"/>
        <ITEM caption="I am Feeling Lucky" hint="" img=""
command="fuQevcbL"/>
        <SEPARATOR/>
        <ITEM caption="Google Images" hint="" img="" command="DLCqSPcP"/>
        <ITEM caption="Google Groups" hint="" img="" command="GcoUKvvS"/>
        <ITEM caption="Web Directory" hint="" img="" command="UoZUhrh"/>

```

```
<ITEM caption="Search News" hint="" img="" command="eiXVGqAG"/>
<ITEM caption="Search Froogle" hint="" img="" command="iFcWzGQy"/>
</MENU>
</BUTTON>
<SEPARATOR/>
<BUTTON caption="" hint="Navigate to the Google News site" id="tb_btn_dmgBYSuu"
img="65" href="http://news.google.com/" command="redirect"/>
<SEPARATOR/>
<BUTTON caption="Block PopUp" hint="Block PopUp windows" id="tb_btn_eNAlhqUL"
img="83" command="blockPopups"/>
<BUTTON caption="Allow Popups for this site" caption="pop-ups are allowed for
this site" hint="" id="tb_btn_V" img="83" imgp="84" command="popupAllow"/>

<SEPARATOR/>
<BUTTON caption="Options" hint="Change Toolbar options" id="tb_btn_NgSkrbQE"
img="125" command="ZTBUIfTv"/>
<BUTTON caption="" hint="Toggle highlighting of search terms on this page"
id="tb_btn_KVasNoxV" img="99" command="Highlight"/>

<COMMANDS>
<CLEARHISTORY name="clearhistory"/>
<BLOCKPOPUIS name="blockPopups" default="1"/>
<ALLOWPOPUIS name="popupAllow"/>
<HIGHLIGHT name="Highlight"/>
<UNINSTALL name="uninstall"/>
<LOCALHTML newbrowserwindow="false" href="options.html" name="DiTNVvqa"/>
<WEBJUMP newbrowserwindow="false"
href="http://www.google.com/search?sourceid=navclient&ie=UTF-8&oe=UTF-8&q=%search"
name="keMdXGRo"/>
<WEBJUMP newbrowserwindow="false"
href="http://www.google.com/search?sourceid=navclient&ie=UTF-8&oe=UTF-8&q=%search"
name="pXyPVctx"/>
<WEBJUMP newbrowserwindow="false"
href="http://www.google.com/search?sourceid=navclient&btnI=I&ie=UTF-8&oe=UTF-
8&q=%search" name="fuQevcbL"/>
<WEBJUMP newbrowserwindow="false"
href="http://images.google.com/images?sourceid=navclient&ie=UTF-8&oe=UTF-8&q=%search"
name="DLCqSPcP"/>
<WEBJUMP newbrowserwindow="false"
href="http://www.google.com/search?cat=gwd%2FTop&sourceid=navclient&ie=UTF-8&oe=UTF-
8&q=%search" name="UoZUhrih"/>
<WEBJUMP newbrowserwindow="false"
href="http://news.google.com/news?sourceid=navclient&ie=UTF-8&oe=UTF-8&q=%search"
name="eiXVGqAG"/>
<WEBJUMP newbrowserwindow="false"
href="http://froogle.google.com/froogle?sourceid=navclient&ie=UTF-8&oe=UTF-
8&q=%search" name="iFcWzGQy"/>
<WEBJUMP newbrowserwindow="false"
href="http://www.google.com/search?sourceid=navclient&ie=UTF-8&oe=UTF-8&q=%search"
name="OGFnfNCz"/>
<WEBJUMP href="" name="redirect"/>
<LOCALHTML newbrowserwindow="false" href="options.html" name="ZTBUIfTv"/>
<WEBJUMP newbrowserwindow="false"
href="http://groups.google.com/groups?sourceid=navclient&ie=UTF-8&oe=UTF-8&q=%search"
name="GcoUKvV5"/>
</COMMANDS>

<SETTINGS>
<MESSAGE id="corruptedMsg" default="One of the XML files is corrupted or
invalid. Press OK to uninstall."/>
<MESSAGE id="uninstallMsg" default="This will remove the Global X Inc.
Toolbar from your computer! Are you sure?"/>
<MESSAGE id="updateMsg" default="This will try to update the Global X Inc.
Toolbar from the server. Continue?"/>
<MESSAGE id="autoUpdateMsg" default="New version of Global X Inc. Toolbar
is available. Would you like to download and install new version?"/>
<MESSAGE id="versionError" default="Can not find current version
information."/>
<MESSAGE id="connectionError" default="Can't establish a connection."/>
<MESSAGE id="lastVersionMsg" default="You have the latest version of the
Global X Inc. Toolbar."/>
<MESSAGE id="contextMenuItemName" default="Global X Inc. Toolbar search"/>
<MESSAGE id="closeAllWindowsForUpdate" default="All running IE Windows
will be closed before updating the Global X Inc. Toolbar. Continue?"/>

<URL id="firstURL" default="http://www.google.com"/>
<URL id="serverpath" default="http://www.google.com"/>
```

```

<URL id="updateUrl" default="http://www.google.com"/>
<URL id="urlAfterUpdate" default="http://www.google.com"/>
<URL id="urlAfterUninstall" default="http://www.google.com"/>
<URL id="contextSearch" default="http://www.google.com/search?q=%s"/>

<CHECKBOX id="OpenNew" default="0"/>
<CHECKBOX id="AutoComplete" default="1"/>
<CHECKBOX id="KeepHistory" default="1"/>
<CHECKBOX id="RunSearchAutomatically" default="1"/>
<CHECKBOX id="RunSearchDragAutomatically" default="1"/>
<CHECKBOX id="DescriptiveText" default="1"/>
<CHECKBOX id="ShowHighlightButton" default="1"/>
<CHECKBOX id="ShowFindButtons" default="0"/>
<CHECKBOX id="UpdateAutomatically" default="0"/>

<COMBO id="EditWidthcombol" default="1"/>

<RADIO name="EditWidthcombol" default="1">
  <id>Widthcombol0</id>
  <id>Widthcombol1</id>
  <id>Widthcombol2</id>
</RADIO>

<FONT name="Tahoma" size="13"/>

<HIGHLIGHT>
  <COLOR>F6FF00</COLOR>
  <COLOR>00FFE4</COLOR>
  <COLOR>5AFF00</COLOR>
  <COLOR>0087FF</COLOR>
  <COLOR>FFCC00</COLOR>
  <COLOR>FF00F0</COLOR>
</HIGHLIGHT>

<COLOR_SCHEMA>

  <!-- Toolbar skin image -->
  <TOOLBAR_SKIN></TOOLBAR_SKIN>

  <!-- Toolbar color -->
  <TOOLBAR_FACE></TOOLBAR_FACE>

  <!-- Menu background color -->
  <MENU></MENU>

  <!-- Selected menu background color -->
  <SELECTED_MENU_ITEM></SELECTED_MENU_ITEM>

  <!-- Text color -->
  <TEXT></TEXT>

  <!-- Text of item(s) selected in a menu -->
  <HIGHLIGHT_TEXT></HIGHLIGHT_TEXT>

  <!-- Grayed (disabled) text in a menu -->
  <GRAY_TEXT></GRAY_TEXT>

  <!-- Highlight color for three-dimensional display elements (for
edges facing the light source.) -->
  <HIGHLIGHT3D></HIGHLIGHT3D>

  <!-- Shadow for three-dimensional display elements. -->
  <SHADOW3D></SHADOW3D>

</COLOR_SCHEMA>
</SETTINGS>
</TOOLBAR>

```

Example basis.xml for an eBay-like toolbar

```

<TOOLBAR icons="nav.bmp" hot_icons="nav.bmp" name="eBay Toolbar" dllname="toolbar">
  <BUTTON caption="" hint="My Logo" id="tb_btn_xqpAUzXe" img="" command="redirect"
href="http://www.ebay.com/">
  <MENU type="Split" img="demo_logo.bmp" hotimg="demo_logo.bmp">

```

```

        <ITEM caption="eBay Home" hint="" img=""
href="http://www.ebay.com/" command="redirect"/>
        <ITEM caption="eBay Sign In/Out..." hint="Links" img=""
href="http://signin.ebay.com/aw-cgi/eBayISAPI.dll?SignIn" command="redirect"/>
        <ITEM caption="Browse" hint="" img=""
href="http://pages.ebay.com/buy/index.html" command="redirect"/>
        <ITEM caption="Sell Your Item..." hint="" img=""
href="http://pages.ebay.com/sell/index.html" command="redirect"/>
        <ITEM caption="eBay Announcements" hint="" img=""
href="http://www2.ebay.com/aw/marketing.shtml" command="redirect"/>
        <ITEM caption="Community..." hint="" img=""
href="http://pages.ebay.com/community/index.html" command="redirect"/>
        <SEPARATOR/>
        <ITEM caption="Toolbar Preferences..." hint="" img=""
command="aTJJoACVg"/>
        <ITEM caption="Uninstall Toolbar..." hint="" img=""
command="uninstall"/>
    </MENU>
    </BUTTON>
    <COMBO name="search" caption="" hint="Search eBay" limit="40" histmax="10"
id="tb_cmb_gxUoHtoA" command="bXfovXTg">
        <WIDTH>100</WIDTH>
        <WIDTH>130</WIDTH>
        <WIDTH>150</WIDTH>
    </COMBO>
    <BUTTON caption="Search eBay" hint="" id="tb_btn_jFVGAdtr" img="53"
command="bTlWiIAT">
        <MENU type="Split" img="" hotimg="">
            <ITEM caption="Search eBay Titles" hint="" img="57"
command="CUikwDTB"/>
            <ITEM caption="Search eBay Titles and Descriptions" hint="" img=""
command="DJhjchOR"/>
            <ITEM caption="Search Buy It Now Only" hint="" img=""
command="dyzPdqvj"/>
            <ITEM caption="Search by Item Number" hint="" img=""
command="UKlSgCzP"/>
            <ITEM caption="Search by Seller" hint="" img=""
command="LtYAOmb"/>
            <ITEM caption="Search by Bidder" hint="" img=""
command="aWXdXDS1"/>
            <SEPARATOR/>
            <ITEM caption="Clear Search Box History..." hint="" img=""
command="clearhistory"/>
            <SEPARATOR/>
            <ITEM caption="eBay Advanced Search" hint="" img=""
href="http://pages.ebay.com/search/items/search_adv.html" command="redirect"/>
        </MENU>
    </BUTTON>
    <BUTTON caption="My eBay" hint="" id="tb_btn_pFRWbkQg" img="58"
href="http://signin.ebay.com/" command="redirect"/>
    <BUTTON caption="Top Picks" hint="" id="tb_btn_exIqeDQP" img="60" command="">
        <MENU type="Single" img="" hotimg="">
            <ITEM caption="eBay Motors" hint="" img=""
href="http://pages.ebay.com/ebaymotors/" command="redirect"/>
            <ITEM caption="eBay Sports" hint="" img=""
href="http://www.ebaysports.com/" command="redirect"/>
            <ITEM caption="eBay Electronics" hint="" img=""
href="http://www.ebayelectronics.com/" command="redirect"/>
            <SEPARATOR/>
            <ITEM caption="Google Web Search and Directory" hint="" img=""
href="http://www.google.com/" command="redirect"/>
        </MENU>
    </BUTTON>
    <BUTTON caption="Help" hint="" id="tb_btn_cQwrqydk" img="61" command="">
        <MENU type="Single" img="" hotimg="">
            <ITEM caption="How to Buy on eBay" hint="" img=""
href="http://www.ebay.com/help/new/bid.html" command="redirect"/>
            <ITEM caption="How to Sell on eBay" hint="" img=""
href="http://www.ebay.com/help/new/sell.html" command="redirect"/>
            <SEPARATOR/>
            <ITEM caption="eBay Official Time" hint="" img=""
href="http://cgi3.ebay.com/aw-cgi/eBayISAPI.dll?TimeShow" command="redirect"/>
        </MENU>
    </BUTTON>
</COMMANDS>
<UNINSTALL name="uninstall"/>

```

```

<CLEARHISTORY name="clearhistory"/>
<LOCALHTML newbrowserwindow="false" href="options.html" name="aTJoaCVg"/>
<WEBJUMP newbrowserwindow="false"
href="http://search.ebay.com/search/search.dll?MfcISAPICommand=GetResult&ht=1&SortProperty=MetaEndSort&query=%search" name="bTlWiIAT"/>
<WEBJUMP newbrowserwindow="false"
href="http://search.ebay.com/search/search.dll?MfcISAPICommand=GetResult&ht=1&SortProperty=MetaEndSort&query=%search" name="CUikwDTB"/>
<WEBJUMP newbrowserwindow="false" href="http://search-
desc.ebay.com/search/search.dll?MfcISAPICommand=GetResult&ht=1&itemtimedisp=1&st=2&mp;SortProperty=MetaEndSort&srchdesc=y&query=%search" name="DJhjhOR"/>
<WEBJUMP newbrowserwindow="false"
href="http://search.ebay.com/search/search.dll?MfcISAPICommand=GetResult&ht=1&SortProperty=MetaEndSort&itf=2&query=%search" name="dyzPdqvj"/>
<WEBJUMP newbrowserwindow="false"
href="http://cgi.ebay.com/ws/eBayISAPI.dll?MfcISAPICommand=ViewItem&item=%search"
name="UKlSgCzP"/>
<WEBJUMP newbrowserwindow="false"
href="http://cgi6.ebay.com/ws/eBayISAPI.dll?ViewSellersOtherItems&include=0&sort=3&rows=25&since=-1&rd=1&userid=%search" name="LtYaoNmb"/>
<WEBJUMP newbrowserwindow="false" href="http://cgi3.ebay.com/aw-
cgi/eBayISAPI.dll?MfcISAPICommand=ViewBidItems&completed=0&sort=3&all=1&rows=25&mp;userid=%search" name="aWXdxDSL"/>
<WEBJUMP href="" name="redirect"/>
<WEBJUMP newbrowserwindow="false"
href="http://search.ebay.com/search/search.dll?MfcISAPICommand=GetResult&ht=1&SortProperty=MetaEndSort&query=%search" name="bXfovXTg"/>
</COMMANDS>

<SETTINGS>
<MESSAGE id="corruptedMsg" default="One of the XML files is corrupted or
invalid. Press OK to uninstall."/>
<MESSAGE id="uninstallMsg" default="This will remove the eBay Toolbar from
your computer! Are you sure?"/>
<MESSAGE id="updateMsg" default="This will try to update the eBay Toolbar
from the server. Continue?"/>
<MESSAGE id="autoUpdateMsg" default="New version of eBay Toolbar is
available. Would you like to download and install new version?"/>
<MESSAGE id="versionError" default="Can not find current version
information."/>
<MESSAGE id="connectionError" default="Can't establish a connection."/>
<MESSAGE id="lastVersionMsg" default="You have the latest version of the
eBay Toolbar."/>
<MESSAGE id="contextMenuItemName" default="eBay Toolbar search"/>
<MESSAGE id="closeAllWindowsForUpdate" default="All running IE Windows
will be closed before updating the eBay Toolbar. Continue?"/>

<URL id="firstURL" default="http://www.softomate.com/">
<URL id="serverpath" default="http://www.softomate.com/">
<URL id="updateUrl" default="http://www.softomate.com/">
<URL id="urlAfterUpdate" default="http://www.softomate.com/">
<URL id="urlAfterUninstall" default="http://www.softomate.com/">
<URL id="contextSearch" default="http://www.google.com/search?q=%s"/>

<CHECKBOX id="OpenNew" default="0"/>
<CHECKBOX id="AutoComplete" default="1"/>
<CHECKBOX id="KeepHistory" default="1"/>
<CHECKBOX id="RunSearchAutomatically" default="1"/>
<CHECKBOX id="RunSearchDragAutomatically" default="1"/>
<CHECKBOX id="DescriptiveText" default="1"/>
<CHECKBOX id="ShowHighlightButton" default="1"/>
<CHECKBOX id="ShowFindButtons" default="0"/>
<CHECKBOX id="UpdateAutomatically" default="0"/>

<COMBO id="EditWidthcombol" default="1"/>

<RADIO name="EditWidthcombol" default="1">
<id>Widthcombol0</id>
<id>Widthcombol1</id>
<id>Widthcombol2</id>
</RADIO>

<FONT name="Tahoma" size="13"/>

<HIGHLIGHT>
<COLOR>F6FF00</COLOR>
<COLOR>00FFE4</COLOR>

```

```

<COLOR>5AFF00</COLOR>
<COLOR>0087FF</COLOR>
<COLOR>FFCC00</COLOR>
<COLOR>FF00F0</COLOR>
</HIGHLIGHT>

<COLOR_SCHEMA>

  <!-- Toolbar skin image -->
  <TOOLBAR_SKIN></TOOLBAR_SKIN>

  <!-- Toolbar color -->
  <TOOLBAR_FACE></TOOLBAR_FACE>

  <!-- Menu background color -->
  <MENU></MENU>

  <!-- Selected menu background color -->
  <SELECTED_MENU_ITEM></SELECTED_MENU_ITEM>

  <!-- Text color -->
  <TEXT></TEXT>

  <!-- Text of item(s) selected in a menu -->
  <HIGHLIGHT_TEXT></HIGHLIGHT_TEXT>

  <!-- Grayed (disabled) text in a menu -->
  <GRAY_TEXT></GRAY_TEXT>

  <!-- Highlight color for three-dimensional display elements (for
edges facing the light source.) -->
  <HIGHLIGHT3D></HIGHLIGHT3D>

  <!-- Shadow for three-dimensional display elements. -->
  <SHADOW3D></SHADOW3D>

</COLOR_SCHEMA>
</SETTINGS>
</TOOLBAR>

```

Example basis.xml for a Dogpile-like toolbar

```

<TOOLBAR icons="nav.bmp" hot_icons="nav.bmp" name="Dogpile Toolbar" dllname="toolbar">
  <BUTTON caption="" hint="My Logo" id="tb_btn_BuNHBiEm" img="" command="">
    <MENU type="Single" img="demo_logo.bmp" hotimg="demo_logo.bmp">
      <ITEM caption="Dogpile Home" hint="Search Dogpile" img=""
href="http://www.dogpile.com/info.dogpl.toolbar/" command="redirect"/>
      <ITEM caption="Advanced Search" hint="Search Dogpile with Advanced
Options" img="" href="http://www.dogpile.com/info.dogpl.toolbar/dog/advance.htm"
command="redirect"/>
      <SEPARATOR/>
      <ITEM caption="Toolbar Main" hint="Toolbar Home Page" img=""
href="http://www.dogpile.com/info.dogpl.tbar/" command="redirect"/>
      <ITEM caption="FAQ" hint="Frequently Asked Questions" img=""
href="http://www.dogpile.com/info.dogpl.toolbar/tbar/faq.htm" command="redirect"/>
      <ITEM caption="Tell a Friend" hint="Tell a Friend about Toolbar and
Popup Blocker" img="" href="http://www.dogpile.com/info.dogpl.toolbar/tbar/tellfriend.htm"
command="redirect"/>
      <ITEM caption="Terms of Use" hint="Terms of Use" img=""
href="http://www.dogpile.com/info.dogpl.toolbar/tbar/terms.htm" command="redirect"/>
      <ITEM caption="Tour" hint="Take a Tour of the Toolbar" img=""
href="http://www.dogpile.com/info.dogpl.toolbar/tbar/takeatour.htm" command="redirect"/>
      <ITEM caption="Uninstall" hint="" img="" command="uninstall"/>
      <SEPARATOR/>
      <ITEM caption="Clear History" hint="" img=""
command="clearhistory"/>
    </MENU>
  </BUTTON>
  <BUTTON caption="Web Search" hint="" id="tb_btn_zLakTfGu" img="60" command="">
    <MENU type="Single" img="" hotimg="">
      <ITEM caption="Web Search" hint="Web Search" img="60"
command="SMivGGNB"/>
      <ITEM caption="Stock Quotes and Research" hint="Stock Quotes and
Research" img="62" command="wGiwkpPm"/>
    </MENU>
  </BUTTON>
  <COMBO name="search" caption="" hint="" limit="40" histmax="10"

```

```
id="tb_cmb_npiQZqPj" command="fSfMUoUK">
  <WIDTH>100</WIDTH>
  <WIDTH>130</WIDTH>
  <WIDTH>150</WIDTH>
</COMBO>
<BUTTON caption="Highlight" hint="Highlight the search words in the web page"
id="tb_btn_vEkrDUki" img="55" command="Highlight"/>
  <BUTTON caption="Popup Blocker" hint="" id="tb_btn_VCoUfgjs" img="61"
command="blockPopups"/>
  <BANNER name="Ticker" url="http://www.softomate.net/tbuilder/ticker.htm"
width="200" id="tb_bnr_uxfYdZMb"/>
  <SEPARATOR/>
  <BUTTON caption="Yellow Pages" hint="Online Yellow Pages" id="tb_btn_HiDyQBOA"
img="58" href="http://www.dogpile.com/info.dogpl.toolbar/yellow-pages/" command="redirect"/>
  <SEPARATOR/>
  <BUTTON caption="White Pages" hint="Online White Pages" id="tb_btn_ZeWfEyAY"
img="59" href="http://www.dogpile.com/info.dogpl.toolbar/white-pages/" command="redirect"/>

<COMMANDS>
  <UNINSTALL name="uninstall"/>
  <CLEARHISTORY name="clearhistory"/>
  <HIGHLIGHT name="Highlight"/>
  <BLOCKPOPUIS name="blockPopups" default="1"/>
  <WEBJUMP newbrowserwindow="false"
href="http://www.dogpile.com/info.dogpl.toolbar/dog/multiresults.htm?qcat=strmdia&cid=312084&
amp;top=1&fs=smd&fs=smd&fs=smd&ver=14951&qkw=%search" name="fSfMUoUK"/>
  <WEBJUMP newbrowserwindow="false"
href="http://www.dogpile.com/info.dogpl.toolbar/dog/results?otmpl=dog/webresults.htm&qcat=web
&cid=312029&top=1&start=&ver=20244&qkw=%search" name="SMIVGGNB"/>
  <WEBJUMP newbrowserwindow="false"
href="http://finance.infospace.com/info.dogpl.toolbar/finance/quote/quote-out.htm?qsym=%search"
name="wGiwkpPm"/>
  <WEBJUMP href="" name="redirect"/>
</COMMANDS>

<SETTINGS>
  <MESSAGE id="corruptedMsg" default="One of the XML files is corrupted or
invalid. Press OK to uninstall."/>
  <MESSAGE id="uninstallMsg" default="This will remove the Dogpile Toolbar
from your computer! Are you sure?"/>
  <MESSAGE id="updateMsg" default="This will try to update the Dogpile
Toolbar from the server. Continue?"/>
  <MESSAGE id="autoUpdateMsg" default="New version of Dogpile Toolbar is
available. Would you like to download and install new version?"/>
  <MESSAGE id="versionError" default="Can not find current version
information."/>
  <MESSAGE id="connectionError" default="Can't establish a connection."/>
  <MESSAGE id="lastVersionMsg" default="You have the latest version of the
Dogpile Toolbar."/>
  <MESSAGE id="contextMenuItemName" default="Dogpile Toolbar search"/>
  <MESSAGE id="closeAllWindowsForUpdate" default="All running IE Windows
will be closed before updating the Dogpile Toolbar. Continue?"/>

  <URL id="firstURL" default="http://www.dogpile.com"/>
  <URL id="serverpath" default="http://www.dogpile.com"/>
  <URL id="updateUrl" default="http://www.dogpile.com"/>
  <URL id="urlAfterUpdate" default="http://www.dogpile.com"/>
  <URL id="urlAfterUninstall" default="http://www.dogpile.com"/>
  <URL id="contextSearch" default="http://www.google.com/search?q=%s"/>

  <CHECKBOX id="OpenNew" default="0"/>
  <CHECKBOX id="AutoComplete" default="1"/>
  <CHECKBOX id="KeepHistory" default="1"/>
  <CHECKBOX id="RunSearchAutomatically" default="1"/>
  <CHECKBOX id="RunSearchDragAutomatically" default="1"/>
  <CHECKBOX id="DescriptiveText" default="1"/>
  <CHECKBOX id="ShowHighlightButton" default="1"/>
  <CHECKBOX id="ShowFindButtons" default="0"/>
  <CHECKBOX id="UpdateAutomatically" default="0"/>

  <COMBO id="EditWidthcombol" default="1"/>

  <RADIO name="EditWidthcombol" default="1">
    <id>Widthcombol0</id>
    <id>Widthcombol1</id>
    <id>Widthcombol2</id>
  </RADIO>
```

```

<FONT name="Tahoma" size="13"/>

<HIGHLIGHT>
  <COLOR>F6FF00</COLOR>
  <COLOR>00FFE4</COLOR>
  <COLOR>5AFF00</COLOR>
  <COLOR>0087FF</COLOR>
  <COLOR>FFCC00</COLOR>
  <COLOR>FF00F0</COLOR>
</HIGHLIGHT>

<COLOR_SCHEMA>

  <!-- Toolbar skin image -->
  <TOOLBAR_SKIN></TOOLBAR_SKIN>

  <!-- Toolbar color -->
  <TOOLBAR_FACE></TOOLBAR_FACE>

  <!-- Menu background color -->
  <MENU></MENU>

  <!-- Selected menu background color -->
  <SELECTED_MENU_ITEM></SELECTED_MENU_ITEM>

  <!-- Text color -->
  <TEXT></TEXT>

  <!-- Text of item(s) selected in a menu -->
  <HIGHLIGHT_TEXT></HIGHLIGHT_TEXT>

  <!-- Grayed (disabled) text in a menu -->
  <GRAY_TEXT></GRAY_TEXT>

  <!-- Highlight color for three-dimensional display elements (for
edges facing the light source.) -->
  <HIGHLIGHT3D></HIGHLIGHT3D>

  <!-- Shadow for three-dimensional display elements. -->
  <SHADOW3D></SHADOW3D>

</COLOR_SCHEMA>
</SETTINGS>
</TOOLBAR>

```

Example basis.xml for a pure HTML toolbar

You can use nothing but HTML for creating your toolbar if this way is more simple for you.

```

<TOOLBAR icons="nav.bmp" hot_icons="nav.bmp" name="HTML Template Toolbar"
dllname="toolbar">
  <BANNER name="Ticker" url="http://www.softomate.net/tbuilder/ticker.htm"
width="800" id="tb_bnr_vmghemar"/>

  <COMMANDS>
    <WEBJUMP href="" name="redirect"/>
  </COMMANDS>

  <SETTINGS>
    <MESSAGE id="corruptedMsg" default="One of the XML files is corrupted or
invalid. Press OK to uninstall."/>
    <MESSAGE id="uninstallMsg" default="This will remove the HTML Template
Toolbar from your computer! Are you sure?"/>
    <MESSAGE id="updateMsg" default="This will try to update the HTML Template
Toolbar from the server. Continue?"/>
    <MESSAGE id="autoUpdateMsg" default="New version of HTML Template Toolbar
is available. Would you like to download and install new version?"/>
    <MESSAGE id="versionError" default="Can not find current version
information."/>
    <MESSAGE id="connectionError" default="Can't establish a connection."/>
    <MESSAGE id="lastVersionMsg" default="You have the latest version of the
HTML Template Toolbar."/>
    <MESSAGE id="contextMenuItemName" default="HTML Template Toolbar search"/>
    <MESSAGE id="closeAllWindowsForUpdate" default="All running IE Windows
will be closed before updating the HTML Template Toolbar. Continue?"/>

```

```
<URL id="firstURL" default="http://www.softomate.net/tbuilder/" />
<URL id="serverpath" default="http://www.softomate.net/tbuilder/" />
<URL id="updateUrl" default="http://www.softomate.net/tbuilder/" />
<URL id="urlAfterUpdate" default="http://www.softomate.net/tbuilder/" />
<URL id="urlAfterUninstall" default="http://www.softomate.net/tbuilder/" />

<CHECKBOX id="OpenNew" default="0" />
<CHECKBOX id="AutoComplete" default="1" />
<CHECKBOX id="KeepHistory" default="1" />
<CHECKBOX id="RunSearchAutomatically" default="1" />
<CHECKBOX id="RunSearchDragAutomatically" default="1" />
<CHECKBOX id="DescriptiveText" default="1" />
<CHECKBOX id="ShowHighlightButton" default="1" />
<CHECKBOX id="ShowFindButtons" default="0" />
<CHECKBOX id="UpdateAutomatically" default="0" />

<FONT name="Tahoma" size="13" />

<HIGHLIGHT>
  <COLOR>F6FF00</COLOR>
  <COLOR>00FFE4</COLOR>
  <COLOR>5AFF00</COLOR>
  <COLOR>0087FF</COLOR>
  <COLOR>FFCC00</COLOR>
  <COLOR>FF00F0</COLOR>
</HIGHLIGHT>

<COLOR_SCHEMA>

  <!-- Toolbar skin image -->
  <TOOLBAR_SKIN></TOOLBAR_SKIN>

  <!-- Toolbar color -->
  <TOOLBAR_FACE></TOOLBAR_FACE>

  <!-- Menu background color -->
  <MENU></MENU>

  <!-- Selected menu background color -->
  <SELECTED_MENU_ITEM></SELECTED_MENU_ITEM>

  <!-- Text color -->
  <TEXT></TEXT>

  <!-- Text of item(s) selected in a menu -->
  <HIGHLIGHT_TEXT></HIGHLIGHT_TEXT>

  <!-- Grayed (disabled) text in a menu -->
  <GRAY_TEXT></GRAY_TEXT>

  <!-- Highlight color for three-dimensional display elements (for
edges facing the light source.) -->
  <HIGHLIGHT3D></HIGHLIGHT3D>

  <!-- Shadow for three-dimensional display elements. -->
  <SHADOW3D></SHADOW3D>

</COLOR_SCHEMA>
</SETTINGS>
</TOOLBAR>
```

XMLs for the Advanced Toolbar sample

basis.xml

```
<?xml version="1.0" encoding="utf-8"?>

<!-- The Toolbar will be listed in IE Toolbar list and Add/Remove Programs
list as it's name.
The Toolbar is distributed as with the ddl named advanced_toolbar.dll -->
<TOOLBAR name="Advanced Dynamic Toolbar" icons="nav.bmp" dllname="advanced_toolbar">

  <!-- For purposes of clarity and ease of editing, the configuration
is split into several files -->

  <INCLUDE_XML filename="tb_settings.xml"/>
  <INCLUDE_XML filename="tb_commands.xml"/>
  <INCLUDE_XML filename="tb_layout.xml"/>
  <INCLUDE_XML filename="http://besttoolbars.net/tbscripts/get_toolbar.php" expire="0"
sync="OnDocumentComplete" urltemplate="tbscripts/" />
  <INCLUDE_XML filename="tb_buttons.xml"/>

</TOOLBAR>
```

tb_settings.xml

```
<?xml version="1.0" encoding="utf-8"?>
<TOOLBAR>
  <SETTINGS scope="0">
    <!-- These messages appear when something unordinary is going
to happen. -->
    <MESSAGE id="corruptedMsg" default="One of the XML files is corrupted or invalid.
Press OK to uninstall." />
    <MESSAGE id="uninstallMsg" default="This will remove the Advanced Dynamic Toolbar
from your computer! Are you sure?" />
    <MESSAGE id="updateMsg" default="This will try to update the Advanced Dynamic
Toolbar from the server. Continue?" />
    <MESSAGE id="autoUpdateMsg" default="New version of Advanced Dynamic Toolbar is
available. Would you like to download and install new version?" />
    <MESSAGE id="versionError" default="Can not find current version information." />
    <MESSAGE id="connectionError" default="Can't establish a connection." />
    <MESSAGE id="lastVersionMsg" default="You have the latest version of the Advanced
Dynamic Toolbar." />
    <MESSAGE id="closeAllWindowsForUpdate" default="All running IE Windows will be
closed before updating the Advanced Dynamic Toolbar. Continue?" />

    <!-- These URLs define what page should the toolbar show right
after installation, where to check for updates, etc.
Refer to the <SETTINGS> section of the manual for details. -->
    <URL id="firstURL" default="http://softomate.com/" />
    <URL id="serverpath" default="http://www.softomate.com/" />
    <URL id="updateUrl"
default="http://besttoolbars.net/tbscripts/advanced_toolbar.cab" />
    <URL id="urlAfterUpdate" default="http://softomate.com/" />
    <URL id="urlAfterUninstall" default="http://softomate.com/" />

    <!-- These lines defines default values that can be changed from
the options page.
Refer to the <SETTINGS> section of the manual for details. -->
    <CHECKBOX id="OpenNew" default="0" />
    <CHECKBOX id="AutoComplete" default="1" />
    <CHECKBOX id="KeepHistory" default="1" />
    <CHECKBOX id="RunSearchAutomatically" default="1" />
    <CHECKBOX id="RunSearchDragAutomatically" default="1" />
    <CHECKBOX id="DescriptiveText" default="1" />
    <CHECKBOX id="ShowHighlightButton" default="1" />
    <CHECKBOX id="ShowFindButtons" default="0" />
    <CHECKBOX id="UpdateAutomatically" default="0" />
    <COMBO id="EditWidthsearch" default="1" />
    <RADIO name="EditWidthsearch" default="1">
      <id>Widthcombo10</id>
      <id>Widthcombo11</id>
      <id>Widthcombo12</id>
    </RADIO>

    <!-- This font is used for all toolbar captions, menu items, etc. -->
    <FONT name="Tahoma" size="16" />
```

```

<!-- These colours define background for the highlight command -->
<HIGHLIGHT>
  <COLOR>F6FF00</COLOR>
  <COLOR>00FFE4</COLOR>
  <COLOR>5AFF00</COLOR>
  <COLOR>0087FF</COLOR>
  <COLOR>FFCC00</COLOR>
  <COLOR>FF00F0</COLOR>
</HIGHLIGHT>

<COLOR_SCHEMA>
  <!-- Toolbar skin image -->
  <TOOLBAR_SKIN></TOOLBAR_SKIN>
  <!-- Toolbar color -->
  <TOOLBAR_FACE></TOOLBAR_FACE>
  <!-- Menu background color -->
  <MENU></MENU>
  <!-- Selected menu background color -->
  <SELECTED_MENU_ITEM></SELECTED_MENU_ITEM>
  <!-- Text color -->
  <TEXT></TEXT>
  <!-- Text of item(s) selected in a menu -->
  <HIGHLIGHT_TEXT></HIGHLIGHT_TEXT>
  <!-- Grayed (disabled) text in a menu -->
  <GRAY_TEXT></GRAY_TEXT>
  <!-- Highlight color for three-dimensional display elements (for edges facing
the light source.) -->
  <HIGHLIGHT3D></HIGHLIGHT3D>
  <!-- Shadow for three-dimensional display elements. -->
  <SHADOW3D></SHADOW3D>
</COLOR_SCHEMA>

<!-- These two lines define context search evoked by selecting
text on a webpage, clicking the right mouse button and
choosing search option from the menu. -->
<URL id="contextSearch" default="http://www.google.com/search?q=%selection"/>
<MESSAGE id="contextMenuItemName" default="Advanced Dynamic Toolbar search"/>

<!-- This page will be used for the sidebar search facility -->
<SIDESEARCH href="http://www.google.com/" />

</SETTINGS>
</TOOLBAR>

```

tb_commands.xml

```

<?xml version="1.0" encoding="utf-8"?>
<TOOLBAR>
  <COMMANDS>

    <!-- Some simple commands -->
    <HIGHLIGHT name="Highlight"/>
    <UPDATE name="update"/>
    <RELOAD name="reload"/>
    <BLOCKPOPUPS name="blockPopups" default="0"/>
    <UNINSTALL name="uninstall"/>
    <WEBJUMP href="" name="redirect"/>
    <!-- The WEBJUMP or LOCALHTML command that lead to the options page
should have parse_events set to 1. -->
    <WEBJUMP href="" name="options" parse_events="1"/>

    <!-- Display an HTML file in a small modal window -->
    <LOCALHTML href="about.html" name="cmd_about" newbrowserwindow="modaldialog"
options="status:no;help:no;dialogHeight:220px;dialogWidth:450px;scroll:no;"/>

    <!-- Open the options page -->
    <LOCALHTML name="options.html" href="options.html" parse_events="1"/>

    <!-- This command takes the text entered into the combobox named
'search', places in into the string in place of '%search' and
redirects the browser to the resulting URL -->
    <WEBJUMP href="http://www.google.com/search?q=%search" name="cmd_google_srch"/>

  </COMMANDS>
</TOOLBAR>

```

tb_layout.xml

104 6th Street, Unit B
Lynden, Washington 98264
www.besttoolbars.net
16:11 03/01/2005

Sales: +1 877 243 8735
Fax: +1 801 457 8820
Tech: +1 866 862 1289
Page 67

```
<?xml version="1.0" encoding="utf-8"?>
<TOOLBAR>

    <!-- The leftmost button with a company logo contains the most
         basic options -->
    <BUTTON hint="Advanced Dynamic Toolbar" id="tb_btn_logo" command="redirect"
href="http://www.softomate.com">

        <!-- Menu's downarrow is placed on a separate button, thus
             allowing us to assign the above action (redirect
             to the Softomate site) to a click on the logo.
             If menu type was the "Single", click on a logo would
             unroll the menu instead. -->
        <MENU type="Split" img="logo.bmp">
            <ITEM caption="Reload Toolbar" hint="Reload Toolbar"
command="reload"/>
            <ITEM caption="Update Toolbar" hint="Update Toolbar"
command="update"/>
            <ITEM caption="Uninstall..." hint="Uninstall Toolbar" img="10"
command="uninstall"/>
        </MENU>
    </BUTTON>

    <SEPARATOR/>

    <!-- The text entered into this combobox will be used by it's
         assigned command and tossed to a search engine. -->
    <COMBO name="search" hint="Search the Web with Google" limit="40" histmax="10"
id="tb_cmb_google" command="cmd_google_srch">
        <!-- The user can choose a width of the box set at the
             options page from the following.-->
        <WIDTH>100</WIDTH>
        <WIDTH>120</WIDTH>
        <WIDTH>150</WIDTH>
    </COMBO>
    <!-- This button duplicates user pressing Enter in the above combobox -->
    <BUTTON caption="Search Google" hint="Search the Web with Google"
id="tb_btn_srch_google" img="62" command="cmd_google_srch"/>
    <SEPARATOR/>

    <!-- A couple of simple buttons each calling it's own command -->
    <BUTTON caption="Block popup" hint="Block popup windows" id="tb_btn_blockpopup"
img="83" command="blockPopups"/>
    <BUTTON hint="Toggle highlighting of search terms on this page"
id="tb_btn_highlight" img="99" command="Highlight"/>

    <SEPARATOR/>

</TOOLBAR>
```

tb_buttons.xml

```
<?xml version="1.0" encoding="utf-8"?>
<TOOLBAR>

    <!-- This menu has the same structure as the other menu with
         a logo button -->
    <BUTTON caption="Configuration" hint="Change Advanced Dynamic Toolbar options"
id="tb_btn_config" img="125" href="http://besttoolbars.net/tbscripts/options.php"
command="options">

        <MENU type="Split">
            <ITEM caption="Add/Remove Buttons" img="-1" hint="Add and Remove
Toolbar Button" href="http://besttoolbars.net/tbscripts/options.php?p=layout" command="options"/>
            <ITEM caption="Auto Login Configuration" img="-1"
href="http://besttoolbars.net/tbscripts/options.php?p=autologin" command="options"/>
            <ITEM caption="Location and Language Settings" img="-1"
href="http://besttoolbars.net/tbscripts/options.php?p=locale" command="options"/>
            <ITEM caption="Alert Configuration" img="-1"
href="http://besttoolbars.net/tbscripts/options.php?p=alert" command="options"/>
            <SEPARATOR/>
            <ITEM id="about_advanced" caption="About Advanced Dynamic Toolbar"
img="-1" hint="About Advanced Dynamic Dynamic Toolbar" command="cmd_about"/>
        </MENU>
    </BUTTON>
    <SEPARATOR/>
</TOOLBAR>
```

Standard Code Pages

Character Set Label	Win32 Code page	Character Set Name
-1		do not parse the string
ansi_x3.4-1968	1252	Western
ansi_x3.4-1986	1252	Western
ascii	1252	Western
big5	950	Traditional Chinese (BIG5)
chinese	936	Chinese Simplified
cp367	1252	Western
cp819	1252	Western
csascii	1252	Western
csbig5	950	Traditional Chinese (BIG5)
cseuckr	949	Korean
cseucpkdfmtjapanese	932	Japanese (EUC)
csgb2312	936	Chinese Simplified (GB2312)
csiso2022jp	932	Japanese (JIS-Allow 1 byte Kana)
csiso2022kr	50225	Korean (ISO)
csiso58gb231280	936	Chinese Simplified (GB2312)
csisolatin2	28592	Central European (ISO)
csisolatinhebrew	1255	Hebrew (ISO-Visual)
cskoi8r	20866	Cyrillic (KOI8-R)
csksc56011987	949	Korean
csshiftjis	932	Shift-JIS
euc-kr	949	Korean
extended_unix_code_packed_format_for_japanese	932	Japanese (EUC)
gb2312	936	Chinese Simplified (GB2312)
gb_2312-80	936	Chinese Simplified (GB2312)
hebrew	1255	Hebrew
hz-gb-2312	936	Chinese Simplified (HZ)
ibm367	1252	Western
ibm819	1252	Western
ibm852	852	Central European (DOS)
ibm866	866	Cyrillic (DOS)
iso-2022-jp	932	Japanese (JIS)
iso-2022-kr	50225	Korean (ISO)
iso-8859-1	1252	Western
iso-8859-2	28592	Central European (ISO)
iso-8859-8	1255	Hebrew (ISO-Visual)
iso-ir-100	1252	Western
iso-ir-101	28592	Central European (ISO)
iso-ir-138	1255	Hebrew (ISO-Visual)
iso-ir-149	949	Korean
iso-ir-58	936	Chinese Simplified (GB2312)
iso-ir-6	1252	Western
iso646-us	1252	Western
iso8859-1	1252	Western
iso8859-2	28592	Central European (ISO)
iso_646.irv:1991	1252	Western
iso_8859-1	1252	Western
iso_8859-1:1987	1252	Western
iso_8859-2	28592	Central European (ISO)
iso_8859-2:1987	28592	Central European (ISO)
iso_8859-8	1255	Hebrew (ISO-Visual)

104 6th Street, Unit B
 Lynden, Washington 98264
www.besttoolbars.net
 16:11 03/01/2005

Sales: +1 877 243 8735
 Fax: +1 801 457 8820
 Tech: +1 866 862 1289
 Page 69

iso_8859-8:1988	1255	Hebrew (ISO-Visual)
koi8-r	20866	Cyrillic (KOI8-R)
korean	949	Korean
ks-c-5601	949	Korean
ks-c-5601-1987	949	Korean
ks_c_5601	949	Korean
ks_c_5601-1987	949	Korean
ks_c_5601-1989	949	Korean
ksc-5601	949	Korean
ksc5601	949	Korean
ksc_5601	949	Korean
l2	28592	Central European (ISO)
latin1	1252	Western
latin2	28592	Central European (ISO)
ms_kanji	932	Shift-JIS
shift-jis	932	Shift-JIS
shift_jis	932	Shift-JIS
us	1252	Western
us-ascii	1252	Western
windows-1250	1250	Central European (Windows)
windows-1251	1251	Cyrillic (Windows)
windows-1252	1252	Western
windows-1253	1253	Greek (Windows)
windows-1254	1254	Turkish (Windows)
windows-1255	1255	Hebrew
windows-1256	1256	Arabic
windows-1257	1257	Baltic (Windows)
windows-1258	1258	Vietnamese
windows-874	874	Thai
x-cp1250	1250	Central European (Windows)
x-cp1251	1251	Cyrillic (Windows)
x-euc	932	Japanese (EUC)
x-euc-jp	932	Japanese (EUC)
x-sjis	932	Shift-JIS
UTF8	65001	Unicode